

文件下载自万友教育网站

版权归学校所有

www.oneuedu.com

万友优势 ADVANTAGE



客户信息私密性

录入系统后自动设置权限，除专属的案件专员其他内部人员及外部人员不可见



精英团队

文案专员为每位学生一对一定制专属方案，移民律师外部协助。团队为学生带来高质量服务



学生案件更新通知

当文案专员每完成一步，会更新在万友系统中，客户会以邮件的形式收到步骤更新通知，查看自己案件的最新进程



全程服务透明

无押金等不必要条款，客户案件信息透明，收费项会在案件开始前与客户协商一致，案件开始后无特殊意外情况，不会产生收费项目

提供服务 PROVIDE SERVICES

学校
查询

课程
查询

学生
签证

留学
准备

出发
准备

绿卡
资讯



详细流程请扫码
添加客服为您解答





Curtin University

International
student guide

2025

Make tomorrow better.

Making a difference

With innovation at our heart, we're committed to initiatives where our staff, students and graduates can make a difference.

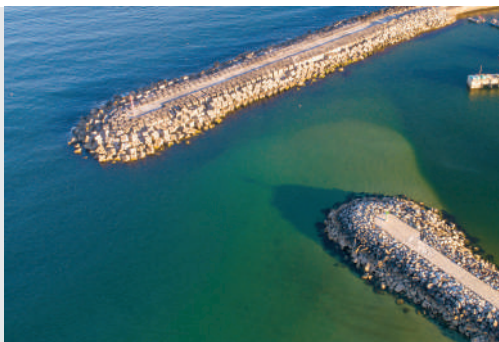
Curtin is celebrating 50 years of nursing education.

Our first nursing diploma was launched in 1975, and, within a year, the course was accredited and recognised as a milestone in Australian nursing.

Curtin now ranks in the top 100 nursing programs in the Global Ranking of Academic Subjects 2023.



Curtin Commerce graduate **Dikshita Awotarowa** founded the 'Women in Finance and Investment Network' to increase the representation of women working in finance and investment industries.



We're developing an **AI technology** that will improve the monitoring and repair of jetties and other marine structures that are vulnerable to concrete corrosion – which will also reduce the environmental impact of the corroded structures.

We're improving land restoration in Western Australia through technologies that help maximise the quality and germination of native seeds.

Pictured: Germination of pelleted small-seeded Myrtaceae species for nursery production.

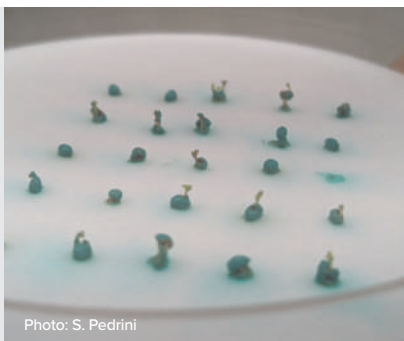


Photo: S. Pedrini

Our researchers are exploring the **sociocultural impact of online influencers**, focusing on how marginalised communities can be both empowered and challenged by what they encounter on social media.



Acknowledgement of Country

Curtin University acknowledges all First Nations of this place we call Australia and recognises the many nations who have looked after Country for more than 60,000 years.

We are honoured and grateful for the privilege to maintain campuses operating in Boorloo (Perth) and Karlkurla (Kalgoorlie) in Australia. We pay our respects to Elders past and present as Custodians and Owners of these lands. We recognise their deep knowledge and their cultural, spiritual and educational practices, and aspire to learn and teach in partnership with them.

Curtin also acknowledges First Nations peoples connected with our global campuses.

We are committed to working in partnership with all Custodians and Owners to strengthen and embed First Nations' voices and perspectives in our decision-making, now and into the future.

IN THIS GUIDE

About Curtin	2	Your research degree choices.....	40
Get a Curtin head start in your career	3	A global research experience: Dr Tin Do.....	42
Study at Curtin in Western Australia.....	4	Check the admission criteria	44
Experience Perth.....	6	Using your home country qualifications to apply.....	48
Benefit from immersive learning	8	Our entry pathways.....	50
Enjoy your study abroad opportunities	10	Curtin English	50
Join our campus community	12	The Curtin English Scholarship.....	50
Explore our accommodation	14	Curtin College	50
Discover your scholarship opportunities	16	How to apply	52
Customise your degree	17	Applying to Curtin if you have a disability	53
Find the course for your career path	18	Getting ready to go	54
Your bachelor degree choices: Single degrees.....	20	Managing your finances as a student	55
Your bachelor degree choices: Double degrees.....	28	Getting to and from Curtin.....	56
Your postgraduate degree choices	32	Glossary.....	57

CURTIN PERTH ACADEMIC CALENDAR

	SEMESTER 1, 2025	SEMESTER 2, 2025	SEMESTER 1, 2026
Orientation Week	17–21 February	14–18 July	16–20 Feb
Semester starts	24 February	21 July	23 February
Semester ends	13 June	7 November	12 June

Applications close two weeks before orientation.¹

Visit curtin.edu/calendar for all study periods for 2025.

Visit curtin.edu/deadlines for application deadlines.

¹ Application closing dates and orientation dates are subject to change and may vary depending on the course and the location of applicants. Dates are for Curtin Perth only. Contact other campuses directly for details.

About Curtin

Curtin is a world-ranked, global university recognised for industry-connected programs that provide skills for agile careers.

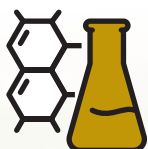
Inspired by the motto 'Look ever forward', Curtin has thrived over the past 57 years. Established in Australia in 1967, Curtin is now a global university with campuses and locations in a further five countries: Malaysia, Singapore, the United Arab Emirates, Mauritius and Sri Lanka.

Curtin's approach to university education is driven by five core values – integrity, respect, courage, excellence and impact – and is underpinned by our dedication to building education and research partnerships that make a positive difference, both for people and the planet.

Our range of courses, research strengths, learning facilities and industry partnerships make Curtin a popular choice for students around the world. In particular, Curtin is renowned for immersive learning and simulated work environments to ensure that our students can apply professional expertise as soon as they graduate.



Our global rankings



A LEADER IN RESEARCH

95% of Curtin's research output rated 'at or above world standard', in the latest Excellence in Research for Australia assessment.



AUSTRALIA'S BEST GRADS

Curtin graduates are rated the best graduate-employees in Australia for employer satisfaction, in the Government's latest survey. (QILT Employer Satisfaction Survey 2022)



TOP 1% IN THE WORLD

Curtin is ranked in the top 1% of universities in the world. (Academic Ranking of World Universities, 2023)



#1 IN WA

Curtin outranks all public universities in Western Australia for undergraduate outcomes of full-time employment and starting salary, as well as staff qualifications. (The Good Universities Guide 2024)



5 STARS PLUS

Curtin continues to achieve the highest QS Stars rating possible for a tertiary institution: Five Stars Plus. (QS Stars 2023)



#1 IN AUSTRALIA

Curtin ranks first in Australia and second in the world for mineral and mining engineering. (QS World University Rankings by Subject 2024)

Get a Curtin head start in your career

To ensure that you graduate with the expertise that employers want, we design our courses in consultation with our expert industry partners and create diverse industry immersion experiences.

Work-integrated learning and industry placements

Work-integrated learning (WIL) in the form of industry placements, industry engagement and fieldwork opportunities are an important part of many Curtin courses.

WIL enables you to implement and consolidate your new knowledge and skills in a real-world industry setting. WIL is highly valued by employers, because it demonstrates that you have gained industry knowledge and career experience before you graduate.

During your studies, you'll benefit from Curtin's renowned strong links with industry, government and non-profit sectors. As part of your WIL experience, you could complete internships with our industry partners or local or national organisations. You may also work on industry projects and research projects, participate in professional networking events, attend industry site visits and complete study tours.

To find out more, visit curtin.edu/industryWIL.

Curtin Extra

At Curtin, you can participate in extracurricular programs that will give you new skills and the opportunity to make new friends and community connections. You can choose programs that relate to your course and your personal interests. For the programs that you complete, you'll receive an official Curtin Extra Certificate as part of your graduation documents. To find out more, visit curtin.edu/curtin-extra.

Curtin Ignition for innovators and entrepreneurs

Many Curtin students want to be an innovator in their field. Whether you're studying molecular genetics or game design, our Curtin Ignition program will help you develop your business ideas and your entrepreneurial skills. To find out more, visit curtin.edu/ignitionprogram.

Volunteering opportunities

If you're keen to help others, Curtin Volunteers! provides volunteering programs that enrich your student experience and develop your capabilities, while also benefiting communities throughout Western Australia. To find out more, visit curtin.edu/volunteering.

Career support

We can help you plan for the career you want, build the skills and study experiences that employers look for, and identify further study or career options. You can attend employer events, participate in professional development programs, and discover employment opportunities to take up during your studies. Curtin also provides free personal accident insurance for students undertaking approved co-curricular work experiences. For more information, visit curtin.edu/careers.



Study at Curtin in Western Australia

Curtin's Western Australian locations are thriving places of community and innovation. You'll become connected with our diverse student and alumni communities and benefit from a global perspective.

PERTH

Curtin Perth is a beautiful and inspiring campus just six kilometres from Perth city. It has technology-rich learning spaces, advanced research centres and extensive library facilities. All of our courses are available to study at Curtin Perth.

PERTH CITY

Curtin Law School in Perth city strengthens our links with the legal profession and the commercial centre of Western Australia. Curtin MBA students can also study in the city.

KALGOORLIE

In Western Australia's historic gold mining region, you can study our renowned engineering courses as well as online courses in business, education and health. For our medicine, nursing and allied health students, Curtin Kalgoorlie also supports regional training and placements within local hospitals and clinics.



Curtin Kalgoorlie



PERTH CITY

CURTIN UNIVERSITY



Engineering Pavilion, Curtin Perth



Curtin Law School



TL Robertson Library, Curtin Perth



Pine Court, Curtin Perth

Experience Perth

Located on the beautiful west coast of Australia, Perth (Boorloo) is multicultural, prosperous and safe – an ideal destination for students and tourists alike.

01 Breathe in the natural beauty

The Perth region has magnificent gardens and nature parks. Take in the best views of the city from Kings Park, which is larger than New York’s Central Park and has thousands of species of beautiful native flora.

02 Experience our vibrant cultural lifestyle

Western Australia’s many culturally and linguistically diverse communities have made Perth a very vibrant city. Many cultural festivals and events are held throughout the year, and you may choose to join community groups that link with your own culture.

03 Earn some spending money

Western Australia has a thriving economy, which provides many job opportunities for local and international students!

04 Use the easy transport options

Perth’s metropolitan area is serviced with an extensive road network and you’ll enjoy our comfortable, reliable public transport.

05 Explore places close to campus

To the north of Curtin Perth, the suburb of Victoria Park buzzes with restaurants, hotels and recreation options. To the south, the Canning River is home to dolphins, swans and other marine life. It’s a beautiful area for picnicking and kayaking.

06 Enjoy the diversity of food and cuisine

Western Australia has many food-producing regions. Margaret River is world-famous for its vineyards and wineries, as well as forests and surfing! Closer to Perth, our scenic Swan Valley has a range of gourmet delicacies. And just near to campus, you can buy fresh fruit and vegetables at the local farmers market.

07 Go shopping!

The shopping and dining precincts of Elizabeth Quay and Forrest Place buzz with life. Visit the city’s fascinating cultural centres and art galleries. Take a scenic train ride to discover the historic port of Fremantle (Walyalup), where the Swan River meets the Indian Ocean.

08 Visit the quokkas

Perth’s coastline features breathtaking beaches and scenery, including Rottnest Island (Wadjemup). The island is a significant cultural site for the Nyungar people and is home to Australia’s cutest marsupial – the quokka.

09 Travel to our famous attractions

Western Australia has world-famous forests, wine regions, geological features, surfing destinations and coastal towns – don’t miss them!

Perth weather

Perth has a Mediterranean climate.



	High / Low (°C)	
Summer (December to February)	30	17.5
Autumn (March to May)	26	13.7
Winter (June to August)	19	8
Spring (September to November)	23	11.7

Source: australia.com

Perth time zone





01



02



04



03



05



06



08

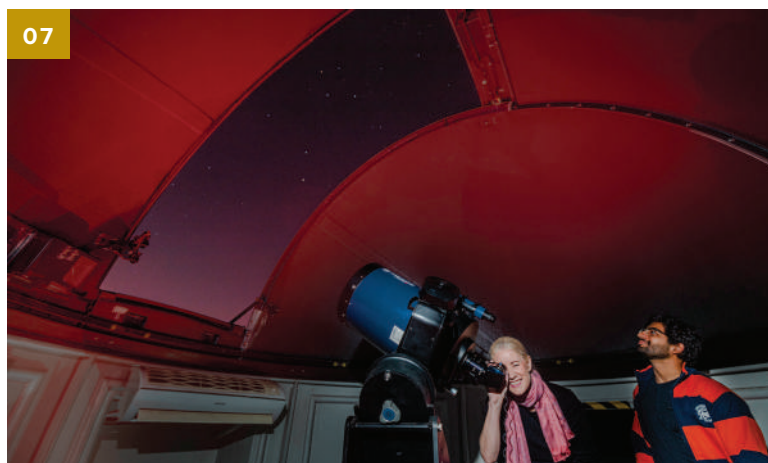


09



Benefit from immersive learning

Curtin has a range of learning environments that simulate real workplaces, so that you can build practical expertise while you study and step into your career with confidence.





02

01 Cyber Security Computer Lab

This laboratory is designed specifically for cyber security activities. The lab is divided into two areas where student teams simulate cyber attacks in one area and perform defensive strategies in the other.

02 Design and Art Precinct

The Design and Art precinct is a versatile environment where you can curate and exhibit your creative works. The precinct comprises art and fashion studios, computer labs and spaces that readily transform into exhibition spaces.

03 Jeanette Hackett Moot Court

Law students can enjoy simulated court proceedings at our high-tech moot court facility in Perth city and can practise their legal skills and debating in global student competitions.

04 Media production studio

Make your mark using interactive media facilities with HD and 4K-compatible technology and industry-standard digital systems for recording, post-production editing and sound mixing.

05 Simulated health industry settings

At Curtin, you will gain practical healthcare skills in our simulated hospital ward. Our equipment includes computer-controlled mannikins and moulage that enhance the realism of your learning.

06 Working like Wall Street

Our Commerce and Business students benefit from simulated stock-trading experience using the LSEG Workspace and conducting technical analyses on stocks and fundamental analyses on financial reports.

07 Astrodome

Curtin's Astrodome houses a 12-inch Meade Refractor telescope, which has automatic tracking capabilities that enable you to capture long exposures of astronomical events.

08 3D virtual anatomy

Immerse yourself in virtual reality. You can cut, pinch and zoom on a virtual human body with our anatomage table. Depending on your course, you may practise clinical care with our virtual patient, Jim the Avatar, and 'virtually' visit an older person's home to assess falls and risks.

09 Curtin Tax Clinic

This clinic enables taxation and law students to provide real-world advice to individuals and small businesses, under the supervision of tax experts.

10 Green Energy Electric Park

At our Green Electric Energy Park (GEEP), you can conduct advanced experiments and research projects on renewable energy sources.

11 Physical Containment Level 2 Laboratory

When you study Biomedical Sciences or Laboratory Medicine at Curtin, you will develop the general and specialised skill sets required for analysing samples and reporting results in the same way as a real industry pathology laboratory.



05



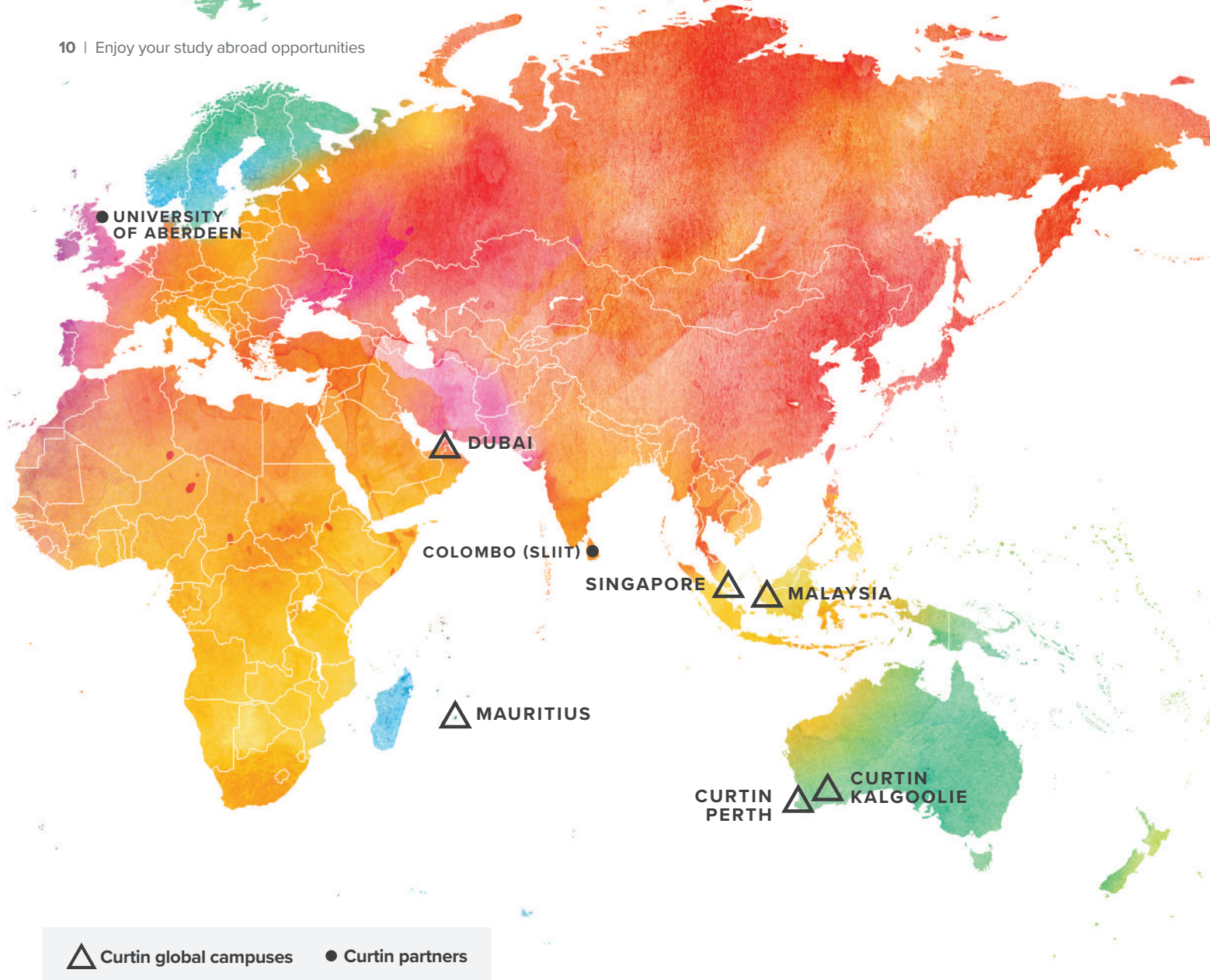
08



09



11





STANFORD
UNIVERSITY

Enjoy your study abroad opportunities

As a Curtin student, you can explore your opportunities to study at our global campuses or at our partner universities in Asia, Africa, Europe, North America and South America.

Completing some of your course in another country provides a unique cultural experience and enables you to create a valuable international network.

We offer a range of global opportunities, including semester exchange, study abroad and overseas summer schools. Our transfer pathway also gives you the flexibility to start your Curtin degree in your home country, before transferring to another Curtin campus with minimal interruption to your studies.

To find out more, visit curtin.edu/global-opportunities.

01 DUBAI

In Dubai, you can study commerce, science, health and arts courses in the Dubai International Academic City – the world's largest dedicated higher-education zone. Or, you might choose to study engineering at Dubai Silicon Oasis, the epicentre of technology and engineering. To find out more, visit curtindubai.ac.ae.

Ar BL En IT

02 COLOMBO

In partnership with the Sri Lanka Institute of Information Technology (SLIIT), Curtin Colombo offers courses in commerce, engineering (including IT and software engineering), science and the arts. And being in the heart of Colombo City, the location provides excellent opportunities to build professional networks. To find out more, visit curtincolombo.lk.

03 SINGAPORE

In one of the world's safest and most well-connected cities, and immersed in a regional economic hub, Curtin Singapore offers courses in commerce, health, science, engineering and the arts. To find out more, visit curtin.edu.sg.

Ar BL He IT

04 MAURITIUS

In the centre of Moka City in an island paradise, Curtin offers a range of commerce, communications, design, health and science courses to study. With Mauritius' renowned biodiversity and ecology, this campus is also a stunning backdrop to study sustainability and environmentalism. To find out more, visit curtinmauritius.ac.mu.

Ar BL He IT

05 MALAYSIA

Curtin Malaysia is in the centre of Miri and features a contemporary, technology-rich learning space with high-tech laboratories, research facilities and training sites. The campus offers a unique opportunity to study commerce, engineering, science, communications and health courses in one of the most biodiverse areas of the world. To find out more, visit curtin.edu.my.

Ag Ac Ar BL En He IT Sc

Study areas

Ac: Architecture and construction

Ag: Agriculture, environment and sustainability

Ar: Arts and creative industries; Culture, society and Indigenous

BL: Business, innovation, management and law

En: Engineering, mining and surveying

He: Health

IT: Information technology

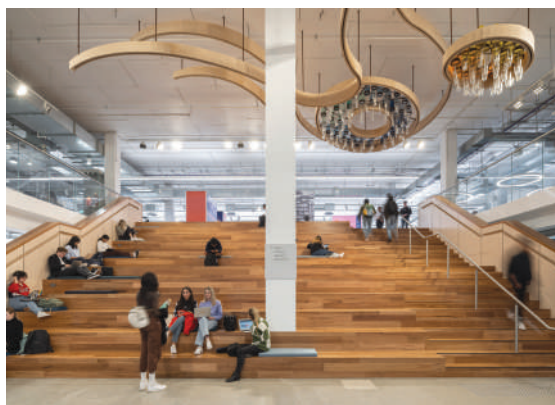
Sc: Physical sciences and mathematics



“Curtin has great tutors and a lot of international students come here to study.

There is a lot of help available, and the student guild offers many benefits. Also, living in Perth is very peaceful, and I really like the weather, food and culture.”

Anya Davaadorj
Master of Commerce (Marketing)



Join our campus community

At Curtin, you will enjoy the sense of connection and community both in and out of tutorials and lectures. You'll also like the range of collaborative learning spaces, outdoor leisure areas and activities on offer between classes.

On-campus convenience

Buy your essentials on campus

Curtin Perth has a large IGA supermarket and a G-Mart for second-hand textbooks and computer equipment, along with printing and binding facilities and a dry-cleaning outlet. You can also order your books online and have them delivered to your door.

Exciting events

Market days, multicultural week, live music and the Guild Ball are just a few of the vibrant events on campus.

Technology access

Access wi-fi across the campus and charge your devices at many locations. Computer labs have current software, graphic workstations, scanners, printing stations and smart boards.

A first-rate library

The TL Robertson Library is a beautiful, light-filled building designed to be your ideal place to study, collaborate with classmates and catch up with friends. Student spaces include group areas; an entire floor dedicated to quiet study; the Makerspace with technologies, tools and materials to get creative; a reading room with a tranquil view of the campus; plus a kitchen and a cafe. Find out more at curtin.edu.au/library.

Exercise, relax, have fun

Curtin Stadium is the home of sport and fitness on campus, offering a range of activities you can participate in at a level that suits you. The stadium has:

- a fully equipped gymnasium, group fitness studio and specialised studio
- indoor and outdoor multi-use courts
- a health and rehabilitation clinic.

Find out more at curtin.edu.au/sport.

You can also relax in the many beautiful gardens on campus, or use some of the extensive green spaces to have some fun – such as our disc golf course.

Food, glorious food

Whether you need a coffee or bubble tea, a burger or bánh mì, you can get it on campus. In addition to the IGA supermarket, we have a range of cafes and an old favourite, the Tavern.

Support services

We'll help you get organised

In Building 102 our dedicated Curtin Connect team can advise you about courses and help with your application, enrolment, getting your ID card and organising your timetable.

We also offer support such as peer-to-peer tutoring and library help, to make your transition to uni easy as can be.

O-Week

Your uni journey starts with Orientation Week, where you can get all the support and advice you need from Curtin Connect and our dedicated student advisors.

Prioritising your health

Curtin has a range of health and wellbeing services for you on campus. They include a physiotherapy clinic and a medical centre where you can visit a doctor, occupational therapist, psychologist, counsellor or social worker. And if you have a disability, or you're caring for someone with a disability, we have dedicated support services for you.

Our Student Wellbeing Advisory service also offers confidential support for any issue that may be affecting you, to help you succeed in your studies.

Career advice

At Curtin, we can help you with career advice and employment resources. Find out more at curtin.edu/career-advice.

Security and personal safety

Our Safer Community Team is here to keep you safe on campus, with 24/7 safety presence and availability, a security escort service, vehicle mechanical assistance, secure-card building access and the SafeZone security app. Plus, there are assistant call points at the main entry doors of campus buildings.

For more information about support and services, visit curtin.edu/personal-support/international.



Explore our accommodation

At Curtin Perth, you can enjoy the independence and convenience of living in on-campus accommodation – a home where you can relax, study and socialise – and have a truly immersive university experience.

Curtin Perth has six on-campus accommodation options for you to choose from in 2025. Managed by St Catherine's College and UniLodge, all of our accommodation is close to campus and shopping amenities – offering you an easy urban lifestyle.

Benefits of living on campus

A convenient lifestyle

All accommodation is just a short walk to your classes. You're also within reach of our on-campus supermarket, food outlets and health services, and close to a shopping centre and food hub.

Plus, there are two bus stations on campus – so when you want to explore further afield, it's easy to catch a bus to cafe strips, restaurants and attractions in nearby suburbs, as well as the entertainment venues and shopping precincts of Perth city.

Cost-efficient living

Accommodation is furnished and your utilities are included in your rent. St Catherine's College residents can also have meals included. You won't need to pay a bond or security deposit, and you'll have free wi-fi and Curtin Stadium gym membership (off-peak hours) – all of which make living on campus even more cost-efficient and convenient.

Independence and friendship

Living on campus during your university years will give you a sense of freedom and independence. And it's easy to make connections with other residents – you'll meet people from different towns, cities, countries and cultures. Imagine the unique experiences and the friendships you'll make that could last a lifetime!

Peace of mind for parents

If you're a parent or guardian whose child is about to start their university journey, you'll appreciate how living on campus will help them transition to independent living while remaining in a safe, structured environment. An on-campus living experience will also enhance your child's engagement with their studies and campus life.

Safety and security

All the accommodation has secure access. Plus, there's staff available to help when you need it. Curtin's Safer Community Team are also on-hand to respond to any general safety and security issues.

St Catherine's College

St Catherine's College gives you a personalised, highly supportive residential experience, with fully catered options, to help you succeed in your university studies. Your rent includes tailored academic support such as tutoring and formal academic dinners.

The college features an impressive dining hall, study spaces, common areas and music rooms. It also offers a program of social events that brings residents together and helps create a thriving student community.



**Book a tour of
St Catherine's College**

UniLodge

The five UniLodge properties at Curtin Perth offer various independent-living options – such as self-contained studios with ensuites and private rooms in shared apartments – to suit different needs and budgets. You'll become part of a culturally diverse community and enjoy a Residential Life Program filled with events and activities throughout the year.



**Book a tour of
UniLodge properties**

Studying in Kalgoorlie?

If you're studying at Curtin Kalgoorlie as part of your course, you can live at our Agricola student accommodation. Agricola is just across from the campus and a short walk to the town centre. To find out more, visit curtin.edu/kalgoorlie-accommodation.

Off-campus living

If you're considering off-campus options, our Accommodation Coaches can help you with information and resources to find accommodation that suits your needs. To find out more, visit curtin.edu/alternative-accommodation.

To find out more, visit curtin.edu/accommodation.





“ Being a first-year student, I felt that living on campus would be convenient for me. At St Catherine’s College, I’m a five-minute walk from home to classes. We’re also located next to the bus station, and we have a supermarket beside the college.

We have a lot of activities that run throughout the week – sporting activities, art classes... a great way to get to know other residents here. ”

Kar Yi Lam

Bachelor of Science (Physiotherapy)

Hear more about Kar Yi’s experience living on campus, at curtin.edu/Karyi.

Discover your scholarship opportunities

International students at Curtin can access a range of merit-based and need-based scholarships.

Scholarships offer financial, academic and career support, giving you more opportunities to gain new skills, expand your horizons and add to your portfolio of achievements.



Curtin English Scholarship

Receive a financial credit of up to A\$7,008 towards your undergraduate or postgraduate tuition once you've completed your Curtin English course.^{1,2}



Merit Scholarship

If you're a high-achieving student, you may be eligible for the Global Curtin Merit Scholarship which grants you a 25% discount on your first year of tuition.¹



Merit Extension Scholarship

The Master of Business Administration (MBA), MBA Advance and Master of Commerce (Marketing) degrees offer merit extension scholarships, granting a 25% fee discount on tuition in your final year.¹

Eligibility criteria

Scholarships are offered through a competitive process for students who are:

- high-achievers
- studying specific courses
- facing special circumstances.

Each scholarship has specific benefits, eligibility criteria, application procedures and application closing dates.² We encourage you to apply for scholarships as soon as you can.

More information

Visit our scholarships website for:

- up-to-date information and eligibility criteria for scholarships
- tips for writing your scholarship application
- an email service that alerts you when the scholarships matching your selection criteria open for applications. You will also receive a reminder email one week before applications close.

Find out more at curtin.edu/scholarships.

¹ Terms and conditions apply

² Scholarships are subject to change



“The Alumni and Family Scholarship helped me to manage my finances when I arrived in Perth ... and it gave me the motivation to do well in my studies.

What I like most about Curtin Perth are the support services, the safe and secure environment, the facilities and relaxation places, and the places to study.”

Dharsini Premramesh

Master of International Business and Entrepreneurship

Customise your degree

At Curtin, you will have opportunities to choose from a range of subjects for your course – giving you the freedom to study for your dream career and pursue your personal study interests.

Single degrees

This degree type is three to five years of full-time study in one specific subject. You will learn about a wide range of topics within this subject, but your studies will focus on your chosen area. You'll gain in-depth knowledge and graduate as an expert in your field.

Double degrees

Some of our degrees can be paired with another degree to broaden your knowledge. A double degree increases your skills and knowledge across two complementary learning areas, giving you more career choices and the flexibility to adapt to changing employment trends.

Majors and specialisations

You can also tailor your learning within your degree to suit your interests and career path. Depending on your course, you can mix majors (a series of eight units)¹ with specialisations (a series of four units) to broaden your professional expertise and deepen your industry knowledge – which will improve your career opportunities and ability to pursue your professional goals.

Studying specialisations can give you the exact skillset you want for your chosen career. Here are some examples:

- A major in Multidisciplinary Science with a specialisation in Professional Writing and Publishing can create a career option in professional science communication.
- Environmental Science with a specialisation in Law can help you make an impact in environmental policy and regulation.
- A major in Animation and Game Design with a specialisation in Innovation and Entrepreneurship can help you grow an entrepreneurial venture in game development.

¹ Note that engineering majors are a series of 19 or 20 units



“ I chose Curtin because it's ranked among the top 1% in the world and the international student fee was fair for a business school with Curtin Business School's prestige.

I gained a Curtin Business School High Achiever award and I'm now mentoring teams in the Business Innovation Lab.

Some of the best things about the Curtin campus are the safety and the support services.

Also, when it comes to activities and sports, there is always something for everyone. **”**

Asib Ali Qureshi

Bachelor of Business Administration



Find the course for your career path

Explore the courses in our range of study areas, and let your passions and interests guide you to your dream career.



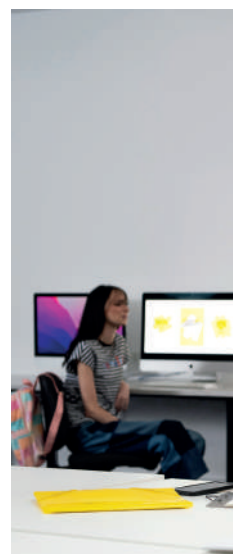
Agriculture, environment and sustainability

Learn how to manage, preserve and protect the living world. Turn your ideas into innovative solutions that address global warming, food production and risks to flora and fauna.

Undergraduate degrees: pages 20, 28

Postgraduate degrees: page 32

Research degrees: pages 40–41



Education

Teachers instil knowledge and skills, and help others achieve their potential – in the classroom and beyond.

Undergraduate degrees: page 22

Postgraduate degrees: page 35

Research degrees: pages 40–41



Business, innovation and law

Learn how to inspire others through innovative thinking and leadership; start your own business venture; and grow your capabilities in areas such as marketing, tourism, property, finance and international business.

Undergraduate degrees: pages 22, 28

Postgraduate degrees: pages 34–35

Research degrees: pages 40–41



Health

Our health courses give you plenty of hands-on experience, through fieldwork and placements in Curtin clinics and research centres, and with our industry partners.

Undergraduate degrees: pages 24, 30

Postgraduate degrees: pages 36–37

Research degrees: pages 40–41



Information technology

Learn how to program computers, administer networks, design software and multimedia, and use artificial intelligence in real-life situations.

Undergraduate degrees: pages 26, 30

Postgraduate degrees: page 38

Research degrees: pages 40–41



Engineering, mining and surveying

Develop your problem-solving skills and learn how to design, construct and test machines, systems, structures, materials and processes.

Undergraduate degrees: pages 22, 28–30

Postgraduate degrees: page 36

Research degrees: pages 40–41



Arts and creative industries

Culture, society and Indigenous

Lead with your imagination and hone your creative skills in our advanced facilities. Learn how to turn your creativity into a business and make your mark on the world.

Undergraduate degrees: pages 20–22, 28

Postgraduate degrees: pages 32–33

Research degrees: page 40–41



Architecture and construction

Can you see the detail and beauty in structures and buildings, both inside and out? Learn how to create quality environments for people to live, work and play.

Undergraduate degrees: page 20

Postgraduate degrees: page 32

Research degrees: pages 40–41



Physical sciences, geoscience and mathematics

Learn in facilities where research and discovery abound, and develop your expertise in growth areas such as biochemistry, industrial modelling and physics.

Undergraduate degrees: pages 26, 30

Postgraduate degrees: page 39

Research degrees: pages 40–41



Your bachelor degree choices: Single degrees

Whether you want to build a more sustainable future, innovate global business or contribute to better health care, a Curtin degree is the place to begin.

Course	CRICOS	Duration	Intake	Indicative first year fee A\$ ¹	Indicative total course fee A\$ ¹	
Agriculture, environment and sustainability						
BACHELOR COURSE						
Advanced Science (Honours) <i>Majors:</i> Agricultural Science Coastal and Marine Science Environmental Science	095949E	4 years	Feb	40,298	161,192	
Agribusiness	029345C	3 years	Feb, Jul	37,100	111,300	
Science <i>Majors:</i> Agricultural Science Coastal and Marine Science Environmental Science, Food Science	061600D	3 years	Feb, Jul	40,572	121,717	
HONOURS YEAR						
Science <i>Majors:</i> Agriculture and Food Science Environment and Marine Science	061491D	1 year	Feb, Jul	41,959	41,959	
Architecture and construction						
BACHELOR COURSE						
Architectural Science	003868A	3 years	Feb, Jul	36,249	108,748	
Construction Management MAL	010548C	4 years	Feb, Jul ³	35,655	142,619	
Interior Architecture (Honours)	112416M	4 years	Feb, Jul ³	36,249	145,001	
Urban and Regional Planning	003903C	4 years	Feb, Jul	33,367	133,468	
Arts and creative industries; Culture, society and Indigenous						
BACHELOR COURSE						
Arts <i>Majors:</i> Anthropology and Sociology Chinese Creative Writing Digital and Social Media English and Cultural Studies Geography History	068750M	3 years	Feb, Jul	34,970	104,910	
Indigenous Australian culture International Relations Japanese Journalism Korean Studies Professional Writing and Publishing Security and Strategic Studies						
Communications <i>Business specialisations:</i> Marketing Foundations MAL MAU SIN Public Relations MAL <i>Design specialisations:</i> Digital Design MAU Graphic Communication MAU Photography	018629D	3 years	Feb, Jul	33,487	100,462	
Creative Arts <i>Majors:</i> Fine Art Screen Arts Theatre Arts	0100633	3 years	Feb, Jul	34,851	104,551	

All courses are offered at Curtin Perth unless otherwise specified. These abbreviations indicate the other Curtin campuses where you can complete the course:

COL Colombo DUB Dubai KAL Kalgoorlie MAL Malaysia MAU Mauritius SIN Singapore

The indicative fees and intake periods shown are for Curtin Perth. Please contact the relevant campus for fees and intake periods

Admission cut-off scores ²										
ATAR (year 12)	WAUFP (CPS)	GCE A-Levels/ STPM/ (best of 3 subjects)	HKDSE	IB	Ontario Gr 12 (%)	India CBSE (%)	India HSC (%)	Sri Lanka	Course prerequisites	
	95	75	14	25	37	90	90	94	14	All majors: Mathematics including calculus Environmental Science: Chemistry is desirable
	70	54	5	15	24	60	60	65	5	Mathematics
	70	54	5	15	24	60	60	65	5	All majors: Mathematics Food Science: Chemistry is desirable
	n/a	n/a	n/a	n/a	n/a	n/a	n/a	n/a	n/a	A bachelor of science (or equivalent) in your chosen specialisation, with a course-weighted average of 65% or above in higher level units
	70	54	5	15	24	60	60	65	5	n/a
	70	54	5	15	24	60	60	65	5	Mathematics
	70	54	5	15	24	60	60	65	5	Applicants seeking CRL must submit a folio ⁴
	70	54	5	15	24	60	60	65	5	n/a
	70	54	5	15	24	60	60	65	5	n/a
	70	54	5	15	24	60	60	65	5	n/a
	70	54	5	15	24	60	60	65	5	n/a

¹ See page 55 for information on tuition fees² See page 49 for information on cut-off scores³ July intake is available only to students with sufficient credit for recognised learning (CRL)⁴ For more information on credit for recognised learning (CRL), visit curtin.edu/applying-for-CRL

Course	CRICOS	Duration	Intake	Indicative first year fee A\$ ¹	Indicative total course fee A\$ ¹	
Design <i>Majors:</i> Advertising and Design Animation and Game Design Design Innovation and Fabrication	098137F	3 years	Feb, Jul	31,992	95,975	
Digital Experience and Interaction Design Fashion Design Graphic Design MAU Photography						
HONOURS YEAR						
Arts	078137E	1 year	Feb, Jul	33,487	33,487	
Business, innovation and law						
BACHELOR COURSE						
Advanced Commerce (Honours)	114113K	4 years	Feb	32,527	130,108	
Business Administration MAL DUB	018007A	3 years	Feb, Jul	32,527	97,582	
Commerce <i>Majors:</i> Accounting DUB MAL MAU SIN Audit Analytics ³ Business Information Systems: MAU Business Information Systems (Extended) Business Law: MAU Economics Finance DUB MAL MAU SIN Financial Planning ³	013905G	3 years	Feb, Jul	32,527	97,582	
Human Resource Management DUB MAL MAU International Business DUB SIN Logistics and Supply Chain Management MAU SIN Management MAL MAU SIN Marketing DUB MAL MAU SIN Property Investment and Development Property Development and Valuation (Extended) Taxation ³ Tourism and Hospitality DUB MAL MAU						
Innovation	112415A	3 years	Feb, Jul	38,021	114,063	
Law	077962B	3 years	Feb	42,683	170,730	
HONOURS YEAR						
Commerce	078136F	1 year	Feb, Jul	32,527	32,527	
Education						
BACHELOR COURSE						
Early Childhood Education	020852A	4 years	Feb, Jul	34,031	136,124	
Primary Education	020853M	4 years	Feb, Jul	34,031	136,124	
Secondary Education <i>Majors:</i> Biology Chemistry Economics English Drama Health and Physical Education History Human Biology	096505C	4 years	Feb	37,076	148,302	
Geography Mathematics Media Production and Analysis Physics Politics and Law Psychology Visual Arts						
Educational Studies	095951M	3 years	Feb, Jul	34,365	103,094	
Engineering, mining and surveying						
BACHELOR COURSE						
Engineering <i>Majors:</i> Chemical Engineering MAL Civil and Construction Engineering COL MAL Electrical and Computer Engineering Electrical and Electronic Engineering ⁴ COL MAL Energy Engineering MAL Industrial and Systems Engineering	072467B	4 years	Feb, Jul	39,383	157,531	
Mechanical Engineering COL DUB MAL Mechatronic Engineering COL MAL Mining Engineering ⁵ KAL Metallurgical Engineering ⁵ KAL Software Systems Engineering						
Mine and Engineering Surveying ⁵ KAL	110733C	3 years	Feb	40,376	121,127	
Science <i>Majors:</i> Extractive Metallurgy ⁶ KAL Mining ⁶ KAL	061600D	3 years	Feb	40,572	121,717	
Surveying (Honours)	102612A	4 years	Feb	40,376	161,502	

All courses are offered at Curtin Perth unless otherwise specified. These abbreviations indicate the other Curtin campuses where you can complete the course:

COL Colombo **DUB** Dubai **KAL** Kalgoorlie **MAL** Malaysia **MAU** Mauritius **SIN** Singapore

The indicative fees and intake periods shown are for Curtin Perth. Please contact the relevant campus for fees and intake periods

Admission cut-off scores ²										
	ATAR (year 12)	WAUFP (CPS)	GCE A-Levels/ STPM/ (best of 3 subjects)	HKDSE	IB	Ontario Gr 12 (%)	India CBSE (%)	India HSC (%)	Sri Lanka	Course prerequisites
	70	54	5	15	24	60	60	65	5	n/a
	n/a	n/a	n/a	n/a	n/a	n/a	n/a	n/a	n/a	A course-weighted average of at least 65% in a relevant humanities bachelor degree
	85	64	11	21	32	76	77.5	79	11	n/a
	70	54	5	15	24	60	60%	65%	5	n/a
	70	54	5	15	24	60	60	65	5	n/a
	70	54	5	15	24	60	60	65	5	n/a
	90	70	12	23	33	80	82.50	85	12	n/a
	n/a	n/a	n/a	n/a	n/a	n/a	n/a	n/a	n/a	High achievement in a relevant bachelor degree
	70	54	5	15	24	60	60	65	5	Mathematics is desirable
	70	54	5	15	24	60	60	65	5	Mathematics is desirable
	70	54	5	15	24	60	60	65	5	All majors: Mathematics is desirable Biology: Mathematics. Science is desirable Chemistry: Mathematics and chemistry. Physics and mathematics (including calculus) are desirable Human Biology: Mathematics (including calculus), chemistry, and human biology or biology are desirable Mathematics: Mathematics (including calculus) Physics: Mathematics (including calculus) and physics. Chemistry is desirable Psychology: Science is desirable
	70	54	5	15	24	60	60	65	5	Mathematics is desirable
	80	59	8	18	28	70	70	71	8	Mathematics including calculus, plus physics or chemistry
	70	54	5	15	24	60	60	65	5	Mathematics
	70	54	5	15	24	60	60	65	5	Extractive Metallurgy: Mathematics Mining: Mathematics, and chemistry or physics
	70	54	5	15	24	60	60	65	5	Mathematics

¹ See page 55 for information on tuition fees² See page 49 for information on cut-off scores³ These courses are available only as part of a double major, which will change the indicative first year fee. See page 28 for double major combinations⁴ This course is not available at Curtin Perth⁵ The third and fourth years are completed at Curtin Kalgoorlie⁶ The final year of this course is completed at Curtin Kalgoorlie

Course	CRICOS	Duration	Intake	Indicative first year fee A\$ ¹	Indicative total course fee A\$ ¹	
Health						
BACHELOR COURSE						
Advanced Biomedical Sciences (Honours) <i>Majors:</i> Clinical Medical Science Discovery Biomedical Science	102739H	4 years	Feb	41,979	167,917	
Biomedical Sciences	102738J	3 years	Feb	40,794	122,383	
Exercise and Sport Science	077744A	3 years	Feb, Jul ³	47,347	142,041	
Health Promotion	003779B	3 years	Feb, Jul	42,369	127,107	
Health, Safety and Environment MAL	064468A	3 years	Feb, Jul	42,369	127,107	
Health Sciences <i>Streams:</i> Accelerated Master Degree Pathway Health Data Health Sciences	003691K	3 years	Feb, Jul	41,908	125,724	
Laboratory Medicine	064464E	4 years	Feb	40,572	162,290	
Medical Radiation Science <i>Majors:</i> Medical Imaging Radiation Therapy	088215B	4 years	Feb	39,242	156,969	
Medicine and Surgery	105741A	5 years	Feb	93,189	465,944	
Midwifery	115618K	3 years	Feb	39,228	117,684	
Nursing <i>Stream:</i> Comprehensive	041794K	3.5 years	Feb	39,227	137,295	
Nursing <i>Stream:</i> Registered Nurse Conversion (Australian registration)	041794K	1 year	Jul	39,227	39,227	
Nutrition and Food Science <i>Streams:</i> Food Science Nutrition	003887J	3 years	Feb, Jul ³	42,369	127,107	
Occupational Therapy (Honours)	094933K	4 years	Feb	44,395	177,580	
Oral Health Therapy	074565F	3 years	Feb	44,106	132,317	
Paramedicine	115619J	3 years	Feb	39,228	117,684	
Pharmacy (Honours)	096304A	4 years	Feb	40,054	160,215	
Physiotherapy (Honours)	108991C	4 years	Feb	48,343	193,371	
Psychology	041070B	4 years	Feb	40,295	161,181	
Psychology and Human Resource Management	080702G	4 years	Feb, Jul	37,217	148,868	
Social Work	068620K	4 years	Feb	39,800	159,199	
Speech Pathology (Honours)	0100583	4 years	Feb	42,658	170,634	
HONOURS YEAR						
Biomedical Sciences	073667G	1 year	Feb	40,794	40,794	
Health Sciences	093502G	1 year	Feb	42,370	42,370	
Medical Sciences	107687H	1 year	Feb	93,189	93,189	

All courses are offered at Curtin Perth unless otherwise specified. These abbreviations indicate the other Curtin campuses where you can complete the course:

COL Colombo **DUB** Dubai **KAL** Kalgoorlie **MAL** Malaysia **MAU** Mauritius **SIN** Singapore

The indicative fees and intake periods shown are for Curtin Perth. Please contact the relevant campus for fees and intake periods

Admission cut-off scores ²										
ATAR (year 12)	WAUFP (CPS)	GCE A-Levels/ STPM/ (best of 3 subjects)	HKDSE	IB	Ontario Gr 12 (%)	India CBSE (%)	India HSC (%)	Sri Lanka	Course prerequisites	
	90	70	12	23	33	80	82.50	85	12	Chemistry and mathematics including calculus
	70	54	5	15	24	60	60	65	5	Mathematics
	70	54	5	15	24	60	60	65	5	
	70	54	5	15	24	60	60	65	5	Mathematics and science are desirable
	70	54	5	15	24	60	60	65	5	Mathematics and science are desirable
	70	54	5	15	24	60	60	65	5	Human biology and mathematics are desirable
	73	55	6	16	25	63	62.50	66.50	6	Chemistry, human biology and mathematics are desirable
	90	70	12	23	33	80	82.50	85	12	Mathematics including calculus, and physics
	95	75	14	25	37	90	90	94	14	Chemistry. Completion of the UCAT ANZ and CASPer test prior to application
	80	59	8	18	28	70	70	71	8	Human biology is desirable
	70	54	5	15	24	60	60	65	5	IELTS 7 in each component or equivalent score in PTE, OET or TOEFL iBT. Human biology and integrated science are desirable
	n/a	n/a	n/a	n/a	n/a	n/a	n/a	n/a	n/a	A recognised 3-year diploma (or equivalent). At least 3 months of full-time work experience as a registered nurse in the past 5 years. A résumé, statement of employment, job description and overseas nursing registration. IELTS 7 in each component or equivalent score in PTE, OET or TOEFL iBT
	70	54	5	15	24	60	60	65	5	Science. Mathematics is desirable
	83	62	9.5	19.5	30	73	74	74.50	9.5	Science
	83	62	9.5	19.5	30	73	74	74.50	9.5	Biology or human biology are desirable
	75	57	7	17	26	65	65	68	7	Human biology is desirable
	80	59	8	18	28	70	70	71	8	Chemistry and mathematics
	90	70	12	22	33	80	82.50	85	12	Science
	70	54	5	15	24	60	60	65	5	Mathematics is desirable
	70	54	5	15	24	60	60	65	5	Mathematics is desirable
	70	54	5	15	24	60	60	65	5	n/a
	80	59	8	18	28	70	70	71	8	Science
	n/a	n/a	n/a	n/a	n/a	n/a	n/a	n/a	n/a	Application into this course is by invitation only. A relevant bachelor degree with a minimum course-weighted average of 65%
	n/a	n/a	n/a	n/a	n/a	n/a	n/a	n/a	n/a	Application into this course is by invitation only. A relevant bachelor degree with a minimum course-weighted average of 65%
	n/a	n/a	n/a	n/a	n/a	n/a	n/a	n/a	n/a	Application into this course is by invitation only. A relevant bachelor degree with a minimum course-weighted average of 65% in years 2–3 of Curtin's Bachelor of Medicine, Bachelor of Surgery

¹See page 55 for information on tuition fees²See page 49 for information on cut-off scores³July intake is available only to students with sufficient credit for recognised learning (CRL)

Course	CRICOS	Duration	Intake	Indicative first year fee A\$ ¹	Indicative total course fee A\$ ¹	
Information technology						
BACHELOR COURSE						
Advanced Science (Honours) <i>Majors:</i> Computing Data Science	095949E	4 years	Feb	40,298	161,192	
Technology (Computer Systems and Networking) COL MAL	041280C	3 years	Feb, Jul	38,390	115,170	
Computing <i>Majors:</i> Computer Science Cyber Security COL DUB MAL SIN Software Engineering COL MAL	0100817	3 years	Feb, Jul	37,285	111,855	
Information Technology COL DUB MAU SIN	0100818	3 years	Feb, Jul	36,250	108,750	
Science <i>Majors:</i> Data Science SIN Information and Communication Technology Software Development	061600D	3 years	Feb, Jul	40,572	121,717	
HONOURS YEAR						
Science <i>Majors:</i> Computing Data Science	061491D	1 year	Feb, Jul	41,959	41,959	
Physical sciences, geoscience and mathematics						
BACHELOR COURSE						
Actuarial Science	038785D	3 years	Feb	35,917	107,750	
Advanced Science (Honours) <i>Majors:</i> Chemistry Earth Sciences Financial Mathematics Industrial and Applied Mathematics Molecular Genetics Physics	095949E	4 years	Feb	40,298	161,192	
Applied Geology <i>Streams:</i> Applied Geology MAL Mining Geology ³ KAL	108986M	3 years	Feb, Jul	41,301	123,902	
Multidisciplinary Science <i>Majors:</i> Computational Sciences Earth and Environmental Sciences Engineering Sciences Physical Sciences	108988J	3 years	Feb, Jul	43,167	129,502	
Science <i>Majors:</i> Biochemistry Chemistry Earth Sciences Mathematics Physics	061600D	3 years	Feb	40,572	121,717	
HONOURS YEAR						
Actuarial Science (Honours)	066674A	1 year	Feb	37,627	37,627	
Science <i>Majors:</i> Chemistry Earth and Planetary Sciences Geophysics Mathematical Sciences Physics	061491D	1 year	Feb, Jul	41,959	41,959	

All courses are offered at Curtin Perth unless otherwise specified. These abbreviations indicate the other Curtin campuses where you can complete the course:

COL Colombo DUB Dubai KAL Kalgoorlie MAL Malaysia MAU Mauritius SIN Singapore

The indicative fees and intake periods shown are for Curtin Perth. Please contact the relevant campus for fees and intake periods

Admission cut-off scores ²										
ATAR (year 12)	WAUFP (CPS)	GCE A-Levels/ STPM/ (best of 3 subjects)	HKDSE	IB	Ontario Gr 12 (%)	India CBSE (%)	India HSC (%)	Sri Lanka	Course prerequisites	
	95	75	14	25	37	90	90	94	14	Mathematics including calculus
	70	53	5	15	24	60	60	65	5	Mathematics. Calculus is desirable
	80	59	8	18	28	70	70	71	8	Computer Science and Cyber Security: Mathematics including calculus Software Engineering: Mathematics
	70	54	5	15	24	60	60	65	5	Mathematics
	70	54	5	15	24	60	60	65	5	Data Science: Mathematics including calculus Information and Communication Technology: Mathematics Software Development: Mathematics
	n/a	n/a	n/a	n/a	n/a	n/a	n/a	n/a	n/a	A bachelor of science or equivalent degree in chosen specialisation, with a course-weighted average of 65% or above in higher level units
	92	71	13	24	34	84	85	88	13	Mathematics including calculus
	95	75	14	25	37	90	90	94	14	Chemistry: Chemistry and mathematics including calculus Earth Sciences: Mathematics including calculus Financial Mathematics: Mathematics including advanced calculus Industrial and Applied Mathematics: Mathematics including advanced calculus Molecular Genetics: Chemistry and mathematics including calculus Physics: Mathematics including advanced calculus, and physics
	70	54	5	15	24	60	60	65	5	Mathematics
	70	53	5	15	24	60	60	65	5	
	70	53	5	15	24	60	60	65	5	Biochemistry: Chemistry and mathematics Chemistry: Chemistry and mathematics Earth Sciences: Mathematics Mathematics: Mathematics including calculus Physics: Mathematics including calculus, and physics
	n/a	n/a	n/a	n/a	n/a	n/a	n/a	n/a	n/a	A degree in actuarial science with a course-weighted average of 75% or above, and have passed 6 out of the 8 Part 1 Institute Exemptions
	n/a	n/a	n/a	n/a	n/a	n/a	n/a	n/a	n/a	A bachelor of science (or equivalent) degree in your chosen specialisation, with a course-weighted average of 65% or above in higher level units

¹ See page 55 for information on tuition fees² See page 49 for information on cut-off scores³ Your first two years of this course are completed at Curtin Perth; the final year is completed at Curtin Kalgoorlie

Your bachelor degree choices: Double degrees

A double degree will broaden your knowledge across two areas – which will improve your career choices and your ability to adapt to new employment trends.

Course 1	Course 2	CRICOS	Duration	Intake	Indicative first-year fee A\$ ¹	
Agriculture, environment and sustainability						
Science <i>Majors:</i> Coastal and Marine Science Environmental Biology	Arts <i>Majors:</i> Anthropology and Sociology Chinese Digital and Social Media Geography International Relations Japanese Professional Writing and Publishing	074653F	4 years	Feb	34,919	
Science <i>Majors:</i> Coastal and Marine Science Environmental Biology	Commerce <i>Majors:</i> Economics and Finance	074654E	4 years	Feb	38,245	
Arts and creative industries; Culture, society and Indigenous						
Arts <i>Majors:</i> Anthropology and Sociology Chinese Creative Writing Digital and Social Media English and Cultural Studies Geography History Indigenous Australian culture International Relations Japanese Journalism Professional Writing and Publishing Screen Arts Theatre Arts	Commerce <i>Majors:</i> Accounting Economics Finance International Business Marketing Tourism and Hospitality	072465D	4 years	Feb, Jul	33,487	
Business, innovation and law						
Law	Arts <i>Majors:</i> International Relations and Journalism	077965K	4.5 years	Feb	31,990	
Law	Commerce <i>Majors:</i> Accounting Economics Finance Human Resource Management Marketing Tourism and Hospitality	078482K	4.5 years	Feb	32,369	
Law	Innovation	114592A	4.5 years	Feb	40,950	
Law	Psychology	096308G	5.5 years	Feb	36,013	
Law	Science <i>Majors:</i> Data Science Earth Sciences Environmental Science Information and Communication Technology	114117F	4.5 years	Feb	42,000	
Engineering, mining and surveying						
Engineering (Honours) <i>Major:</i> Electrical and Electronic Engineering	Science <i>Majors:</i> Computer Science Data Science Physics	095950A	5 years	Feb, Jul	39,383	
Engineering (Honours) <i>Major:</i> Chemical Engineering	Science <i>Major:</i> Chemistry	050336F	5 years	Feb	39,383	
Engineering (Honours) <i>Major:</i> Chemical Engineering	Science <i>Major:</i> Extractive Metallurgy	043753C	5 years	Feb	39,383	

All courses are offered at Curtin Perth unless otherwise specified. These abbreviations indicate the other Curtin campuses where you can complete the course:

COL Colombo **DUB** Dubai **KAL** Kalgoorlie **MAL** Malaysia **MAU** Mauritius **SIN** Singapore

The indicative fees and intake periods shown are for Curtin Perth. Please contact the relevant campus for fees and intake periods

Admission cut-off scores ²											
Indicative total fee A\$ ¹	ATAR (Year 12)	WAUFP (CPS)	GCE A-Levels/ STPM/ (best of 3 subjects)	HKDSE	IB	Ontario Gr 12 (%)	India CBSE (%)	India HSC (%)	Sri Lanka	Course prerequisites	
139,676	75	57	7	17	26	65	65	68	7	Mathematics and a science subject	
152,978	75	57	7	17	26	65	65	68	7	Mathematics and a science subject	
133,949	70	54	5	15	24	60	60	65	5	Some major combinations may have a portfolio requirement	
159,950	90	70	12	23	33	80	82.50	85	12	n/a	
161,846	90	70	12	23	33	80	82.50	85	12	n/a	
204,750	90	70	12	23	33	80	82.50	85	12	n/a	
216,081	90	70	12	23	33	80	82.50	85	12	Mathematics is desirable	
210,000	90	70	12	23	33	80	82.50	85	12	Data Science: Mathematics including calculus Earth Sciences: Mathematics Environmental Science: Mathematics Information and Communication Technology: Mathematics	
196,913	80	59	8	18	28	70	70	71	8	Electrical and Electronic, and Computer Science: Mathematics including calculus, plus chemistry or physics Electrical and Electronic, and Data Science: Mathematics including calculus, and physics Electrical and Electronic, and Physics: Mathematics including calculus, and physics	
196,313	80	59	8	18	28	70	70	71	8	Chemistry, mathematics including calculus, and physics	
196,913	80	59	8	18	28	70	70	71	8	Mathematics including calculus, plus chemistry or physics	

¹See page 55 for information on tuition fees²See page 49 for information on cut-off scores

Course 1	Course 2	CRICOS	Duration	Intake	Indicative first-year fee A\$ ¹	
Engineering (Honours) <i>Major: Civil and Construction Engineering</i>	Science <i>Major: Mining</i>	050568A	5 years	Feb	39,383	
Engineering (Honours) <i>Major: Mechatronic Engineering</i>	Science <i>Major: Computer Science</i>	095950A	5 years	Feb, Jul	39,383	
Engineering and Commerce						
Engineering (Honours) <i>Majors:</i> Chemical Engineering Mechanical Engineering Civil and Construction Metallurgical Engineering Engineering Electrical and Electronic Mining Engineering Engineering	Commerce <i>Majors:</i> Accounting Economics Finance Management	066675M	5.5 years	Feb, Jul	39,383	
Health						
Health Promotion	Health and Safety	046654D	4 years	Feb	42,022	
Nutrition	Health Promotion	046656B	4 years	Feb	42,022	
Psychology	Commerce <i>Majors: Human Resource Management and Industrial Relations</i>	099598B	5 years	Feb	38,245	
Psychology	Commerce <i>Major: Marketing</i>	095948F	5 years	Feb	38,245	
Information technology						
Technology (Computer Systems and Networking)	Information Technology	102589F	4 years	Feb, Jul	37,320	
Physical sciences, geoscience and mathematics						
Applied Geology	Commerce <i>Major: Finance</i>	110731E	4 years	Feb, Jul	35,473	
Applied Geology	Science <i>Major: Environmental Biology</i>	110732D	4 years	Feb, Jul	40,240	
Science <i>Major: Chemistry</i>	Arts <i>Majors:</i> Anthropology and International Relations Sociology Japanese Chinese Professional Writing and Digital and Social Media Publishing Geography	074653F	4 years	Feb	34,919	
Science <i>Major: Chemistry</i>	Commerce <i>Majors: Economics and Finance</i>	074654E	4 years	Feb	38,245	
Science <i>Majors:</i> Data Science Mathematics	Arts <i>Majors:</i> Anthropology and International Relations Sociology Japanese Chinese Professional Writing and Digital and Social Media Publishing Geography	074653F	4 years	Feb	34,919	
Science <i>Majors: Data Science and Mathematics</i>	Commerce <i>Majors: Economics and Finance</i>	074654E	4 years	Feb	38,245	
Science <i>Major: Physics</i>	Arts <i>Majors:</i> Anthropology and International Relations Sociology Japanese Chinese Professional Writing and Digital and Social Media Publishing Geography	074653F	4 years	Feb	34,919	
Science <i>Major: Physics</i>	Commerce <i>Majors: Economics and Finance</i>	074654E	4 years	Feb	38,245	

All courses are offered at Curtin Perth unless otherwise specified. These abbreviations indicate the other Curtin campuses where you can complete the course:

COL Colombo **DUB** Dubai **KAL** Kalgoorlie **MAL** Malaysia **MAU** Mauritius **SIN** Singapore

The indicative fees and intake periods shown are for Curtin Perth. Please contact the relevant campus for fees and intake periods

Admission cut-off scores ²											
	Indicative total fee A\$ ¹	ATAR (Year 12)	WAUFP (CPS)	GCE A-Levels/ STPM/ (best of 3 subjects)	HKDSE	IB	Ontario Gr 12 (%)	India CBSE (%)	India HSC (%)	Sri Lanka	Course prerequisites
	196,913	80	59	8	18	28	70	70	71	8	Mathematics including calculus, plus chemistry or physics
	196,913	80	59	8	18	28	70	70	71	8	Mathematics including calculus, plus chemistry or physics
	216,605	80	59	8	18	28	70	70	71	8	Mathematics (including Calculus) and either Chemistry or Physics
	168,087	70	54	5	15	24	60	60	65	5	Science is desirable
	168,087	70	54	5	15	24	60	60	65	5	Science is required
	191,223	70	54	5	15	24	60	60	65	5	Mathematics is desirable
	191,223	70	54	5	15	24	60	60	65	5	
	149,285	70	54	5	15	24	60	60	65	5	Mathematics. Calculus is desirable
	141,893	70	54	5	15	24	60	60	65	5	Mathematics
	160,960	70	54	5	15	24	60	60	65	5	Mathematics and a science subject
	139,676	75	57	7	17	26	65	65	68	7	Chemistry and mathematics
	152,978	75	57	7	17	26	65	65	68	7	Chemistry and mathematics Including calculus
	139,676	80	59	8	18	28	70	70	71	8	Mathematics including calculus
	152,978	80	59	8	18	28	70	70	71	8	Mathematics including calculus
	139,676	80	59	8	18	28	70	70	71	8	Mathematics including calculus, and physics
	152,978	80	59	8	18	28	70	70	71	8	Mathematics including calculus, and physics

¹See page 55 for information on tuition fees²See page 49 for information on cut-off scores

Your postgraduate degree choices

Complete a postgraduate course to specialise or advance your current career, or to switch to a new career.

Course	CRICOS	Duration	Intake	Indicative first-year fee A\$ ¹	Indicative total fee A\$ ¹	Admission criteria ²
Agriculture, environment and sustainability						
GRADUATE CERTIFICATE						
Environment and Climate Emergency	0101367	6 months	Feb, Jul	15,996	15,996	A recognised bachelor degree in any field, or at least 5 years of relevant work experience (subject to approval)
Food Science and Technology	014167F	6 months	Feb, Jul	20,519	20,519	A bachelor degree (or equivalent) in agriculture, engineering, environmental health, home economics, nutrition, science, or other related field. Applicants with other qualifications and experience are considered on an individual basis
GRADUATE DIPLOMA						
Environment and Climate Emergency	0101366	1 year	Feb, Jul	31,992	31,992	A recognised bachelor degree, or a Curtin Graduate Certificate in Environment and Climate Emergency
Food Science and Technology	007289K	1 year	Feb, Jul	41,037	41,037	A bachelor degree (or equivalent) in agriculture, engineering, environmental health, home economics, nutrition, science, or other related field. Applicants with other qualifications and experience are considered on an individual basis
MASTER DEGREE						
Environment and Climate Emergency	0101365	2 years	Feb, Jul	31,992	63,983	A recognised bachelor degree (or equivalent) in any field (you may also require relevant work experience), or a bachelor honours degree, or a Curtin Graduate Certificate in Environment and Climate Emergency
Science (Agriculture and Food Security) <i>Majors:</i> Agricultural Systems Food Security	107626K	2 years	Feb, Jul	42,594	85,187	A bachelor degree in a life science field
Science (Food Science and Technology)	064466C	2 years	Feb, Jul	41,037	82,075	A bachelor degree (or equivalent), graduate certificate or graduate diploma in agriculture, engineering, environmental health, home economics, nutrition, science or other related field. Applicants with other qualifications and experience are considered on an individual basis
Architecture and construction						
GRADUATE CERTIFICATE						
Development Planning	023976J	6 months	Feb, Jul	16,710	16,710	A recognised bachelor degree (or equivalent), or relevant, extensive work experience. Applications via the work experience pathway will be considered on an individual basis
MASTER DEGREE						
Architecture	058728C	2 years	Feb, Jul	37,623	75,246	A recognised bachelor degree in architecture (or equivalent). Entry to this course is competitive and academic achievement in the final two semesters of study, or equivalent, is considered. A folio submission may also be required
Urban and Regional Planning	050344F	1.5 years	Feb, Jul	34,729	52,093	A bachelor or postgraduate degree with 100 credits (or equivalent) of content closely related to urban and regional planning, or a Graduate Certificate in Development Planning with a bachelor degree in any field. Applicants with considerable work/life experience in urban and regional planning will be considered for CRL upon completing the Graduate Certificate in Development Planning
Arts and creative industries; Culture, society and Indigenous						
GRADUATE CERTIFICATE						
Arts <i>Majors:</i> Creative Writing Fine Art Professional Writing and Publishing Screen Arts	098147D	6 months	Feb, Jul	17,597	17,597	A recognised bachelor degree (or equivalent)

All courses are offered at Curtin Perth unless otherwise specified. These abbreviations indicate the other Curtin campuses where you can complete the course:

COL Colombo **DUB** Dubai **KAL** Kalgoorlie **MAL** Malaysia **MAU** Mauritius **SIN** Singapore

The indicative fees and intake periods shown are for Curtin Perth. Please contact the relevant campus for fees and intake periods

Course	CRICOS	Duration	Intake	Indicative first-year fee A\$ ¹	Indicative total fee A\$ ¹	Admission criteria ²
Design	103009A	6 months	Feb	16,152	16,152	A recognised bachelor degree in design or a related field, or work experience in design or a related field, or a portfolio that evidences prior design work
Digital and Social Media	030948K	6 months	Feb, Jul	16,663	16,663	A recognised bachelor degree (or equivalent), or relevant extensive work experience (assessed on an individual basis)
Global Engagement	114119D	6 months	Feb	17,396	17,396	A recognised bachelor degree (or equivalent), or at least 2 years of relevant work experience (assessed on an individual basis)
International Relations and National Security	074661F	6 months	Feb, Jul	16,706	16,706	A recognised bachelor degree (or equivalent), or relevant extensive work experience (assessed on an individual basis)
Multimedia Journalism	107666B	6 months	Feb	15,996	15,996	A recognised bachelor degree in an unrelated field; or recent, relevant and extensive work experience
GRADUATE DIPLOMA						
Design	103010H	1 year	Feb, Jul	32,304	32,304	A recognised bachelor degree (or equivalent), or relevant, extensive work experience. Applications via the work experience pathway are considered on an individual basis
Digital and Social Media	030949J	1 year	Feb, Jul	33,325	33,325	A recognised bachelor degree (or equivalent) in any field, or completion of units in Curtin's Graduate Certificate in Digital and Social Media or Internet Communications
International Relations and National Security	074660G	1 year	Feb, Jul	33,411	33,411	A recognised bachelor degree, or a Graduate Certificate in International Relations and National Security
Multimedia Journalism	107670F	1 year	Feb	31,992	31,992	A recognised bachelor degree in an unrelated field
MASTER DEGREE						
Arts <i>Majors:</i> Creative Writing Fine Art Professional Writing and Publishing Screen Arts	098146E	2 years	Feb, Jul	35,194	70,387	A recognised bachelor degree or equivalent. You may require relevant work experience, or a recognised bachelor degree in any field with honours, or a graduate certificate or diploma from a recognised institution
Design	103008B	2 years	Feb, Jul	32,304	64,609	A recognised degree in design, or work experience in design or a related field, or a portfolio that evidences prior design work
Digital and Social Media	032988G	1.5 years	Feb, Jul	33,325	49,987	A recognised bachelor degree (or equivalent) in an any field, or completion of units in Curtin's Graduate Certificate in Digital and Social Media
Global Engagement	114385H	1.5 years	Feb	34,793	52,189	A recognised bachelor degree in a relevant field, or at least 5 years of relevant professional experience
Global Engagement (Advanced)	114386G	2 years	Feb, Jul	34,793	69,584	A recognised bachelor degree in a relevant field, or at least 5 years of relevant professional experience
Human Rights	061485B	1.5 years	Jul	34,793	52,189	A recognised bachelor degree (or equivalent) in arts, education, health, humanities, journalism, law, psychology or social work; or a recognised bachelor degree (or equivalent) in any field, plus one year of relevant vocational experience; or a bachelor honours degree, graduate certificate or graduate diploma
Human Rights and Global Engagement	114112M	2 years	Feb, Jul	34,793	69,584	A recognised bachelor degree (or equivalent) in arts, education, health, humanities, journalism, law, psychology or social work; or a recognised bachelor degree (or equivalent) in any field, plus one year of relevant vocational experience; or a bachelor honours degree, graduate certificate or graduate diploma
Indigenous Australian Cultural Studies	108990D	1 year	Feb, Jul	35,301	35,301	A bachelor degree in any field
International Relations and National Security	074662E	1.5 years	Feb, Jul	33,411	50,117	A 4-year bachelor degree in any field; or a 3-year bachelor degree in any field plus one of the following: honours, a graduate certificate or graduate diploma in any field, one year of relevant work experience Applicants with a Curtin Graduate Diploma in International Relations and National Security who have completed the first 4 units of that course will be considered for entry
Multimedia Journalism	107623B	1.5 years	Feb	33,571	50,357	A recognised bachelor degree in an unrelated field
Multimedia Journalism (Global)	107624A	2 years	Feb, Jul	32,934	65,868	A recognised bachelor degree in an unrelated field

¹ See page 55 for information on tuition fees² These admission criteria are in addition to English language proficiency and other course requirements. See pages 46–49 for more information

Course	CRICOS	Duration	Intake	Indicative first-year fee A\$ ¹	Indicative total fee A\$ ¹	Admission criteria ²
Business, innovation and law						
GRADUATE CERTIFICATE						
Business SIN	074652G	6 months	Jan, May, Aug	19,294	19,294	A recognised bachelor degree and at least 5 years of work experience with at least 3 years at a managerial, supervisory and/or senior professional level; or 8 years of work experience with at least 5 years of managerial experience
Business Fundamentals	102810F	6 months	Feb, Jul	16,547	16,547	A bachelor degree in any field, or at least 5 years of relevant work experience
Corporate Innovation	111434F	6 months	Feb, Jul	16,547	16,547	A bachelor degree in any field, or at least 3 years of relevant work experience
Digital Marketing DUB	0100482	6 months	Feb, Jul	17,335	17,335	A recognised bachelor degree (or equivalent) in any field, or at least 5 years of relevant work experience
Minerals and Energy Economics	018030B	6 months	Jan, Sep	17,651	17,651	A recognised bachelor degree and at least 2 years post-degree, relevant work experience; or 8 years of significant work experience at a recognisable level of responsibility
Marketing	044636M	6 months	Feb, Jul	17,335	17,335	A recognised bachelor degree (or equivalent) in any field, or at least 5 years of relevant work experience
Professional Accounting	051616A	6 months	Feb, Jul	18,375	18,375	A recognised bachelor degree (or equivalent) in an unrelated field, or a recognised 4-year overseas qualification in accounting, or 3–5 years of relevant work experience
Project Management MAL	029361C	6 months	Feb, Jul	17,099	17,099	A recognised bachelor degree (or equivalent), or 5 years of management experience. Applications via this pathway are considered on an individual basis
Taxation Practice	102740D	6 months	Feb, Jul	17,335	17,335	A recognised bachelor degree (or equivalent), or relevant work experience
GRADUATE DIPLOMA						
Business	006112K	1 year	Jan, May, Aug	38,589	38,589	A recognised bachelor degree in any field and at least 5 years of experience with at least 3 years at managerial, supervisory and/or senior professional level
Legal Practice	096301D	1 year	Feb	39,952	39,952	A recognised Bachelor of Laws or Juris Doctor (or equivalent) approved under the Legal Profession (Admission) Rules 2009 (WA), or written approval from the Legal Practice Board of Western Australia to enrol in the Graduate Diploma of Legal Practice course
Professional Accounting	051622C	1 year	Feb, Jul	36,403	36,403	A recognised bachelor degree in any field, or a Graduate Certificate in Professional Accounting
Project Management MAL	027213J	1 year	Feb, Jul	34,198	34,198	A recognised bachelor degree or equivalent, or a Graduate Certificate in Project Management (applicants in this pathway may be eligible for CRL)
MASTER DEGREE						
Accounting	107620E	1 year	Feb, Jul	36,403	36,403	A recognised bachelor degree in accounting
Business Administration <i>Majors:</i> Business Administration SIN Leadership SIN Energy Transition	074577B	1.5 years	Jan, May, Aug	44,543	59,391	A recognised bachelor degree or a Graduate Certificate in Business, plus at least 3 years of relevant work experience at managerial level. Entry is competitive and applicants will be interviewed in the final stages of application
Business Administration (Advanced) <i>Majors:</i> Business Administration Leadership Energy Transition	093141F	2 years	Jan, May, Aug	49,021	78,433	A recognised bachelor degree or a Graduate Certificate in Business, and at least 3 years of subsequent relevant work experience. Entry is competitive and applicants will be interviewed in the final stages of application
Commerce <i>Majors:</i> Finance Human Resources Marketing Supply Chain Management	078409G	2 years	Feb, Jul	36,404	72,808	A recognised bachelor degree (or equivalent) in any field
Innovation and Entrepreneurship	110823A	2 years	Feb, Jul	33,095	66,190	A recognised bachelor degree in any field

All courses are offered at Curtin Perth unless otherwise specified. These abbreviations indicate the other Curtin campuses where you can complete the course:

COL Colombo DUB Dubai KAL Kalgoorlie MAL Malaysia MAU Mauritius SIN Singapore

The indicative fees and intake periods shown are for Curtin Perth. Please contact the relevant campus for fees and intake periods

Course	CRICOS	Duration	Intake	Indicative first-year fee A\$ ¹	Indicative total fee A\$ ¹	Admission criteria ²
Minerals and Energy Economics	072466C	1.5 years	Jan, Sep	35,301	52,952	An approved bachelor degree and at least 3 years of relevant experience, or a Curtin Graduate Certificate in Business, or a Curtin Graduate Certificate in Mineral and Energy Economics
Professional Accounting <i>Majors:</i> Advanced Accounting CPA Australia Digital Technologies and Data Management	107625M	2 years	Feb, Jul	36,403	72,807	A recognised bachelor degree in any field, or a Graduate Certificate or Graduate Diploma in Project Management
Project Management	098520K	2 years	Feb, Jul	34,198	68,396	A recognised bachelor degree (or equivalent), or a Graduate Certificate or Graduate Diploma in Project Management
Science (Project Management) MAL	027245A	1.5 years	Feb, Jul	34,198	51,297	A recognised bachelor degree (or equivalent), or a Graduate Certificate or Graduate Diploma in Project Management
Taxation	102741C	1 year	Feb, Jul	34,671	34,671	A recognised bachelor degree (or equivalent) in taxation, business, commerce or a related field, and 3–5 years of relevant work experience; or a Graduate Certificate in Taxation with a course-weighted average of at least 65% (or equivalent) and at least 2 years of relevant work experience
MASTER DOUBLE DEGREES						
Science (Minerals and Energy Economics), Business Administration	050596G	2 years	Jan, Sep	40,376	80,751	A bachelor degree and at least 3 years of post-degree relevant work experience (entry is competitive and applicants will be interviewed), or a Curtin Graduate Certificate in Business or Minerals and Energy Economics
Education						
GRADUATE CERTIFICATE						
Education	102809K	6 months	Feb, Aug	16,849	18,849	A recognised bachelor degree in any field
MASTER DEGREE						
Arts (Applied Linguistics)	023985G	1 year	Feb, Aug	33,902	33,902	One of the following: <ul style="list-style-type: none"> • A recognised 4-year education/teaching degree (normally a bachelor of education or combined science and education) • A 3-year bachelor degree (or equivalent), plus either a Graduate Diploma in Education or a Master of Teaching (or equivalent) • A 3-year bachelor degree (or equivalent), plus either a Graduate Certificate in TESOL or a CELTA (or equivalent) • A 3-year bachelor degree (or equivalent) plus at least 2 years of full-time language-teaching experience in the past 10 years • an honours or a master degree
Education	004005G	1 year	Feb, Aug	33,697	33,697	One of the following: <ul style="list-style-type: none"> • A recognised 4-year degree in education or a combined/double education degree • A recognised 3-year degree in any field plus a Graduate Diploma in Teaching, or a Master of Teaching (or equivalent)
Teaching (Early Childhood, Primary, Secondary)³	098318A	2 years	Feb, Aug	33,697	67,395	A recognised bachelor degree (or equivalent) and at least a year of study in an area related to the early childhood, primary or secondary curriculum. You must have a current Working with Children Check and had a recent criminal record screening at the time of enrolment
TESOL	101413	2 Years	Feb, Aug	33,697	67,395	A recognised bachelor degree in any field

¹ See page 55 for information on tuition fees² These admission criteria are in addition to meeting Curtin's English language proficiency and other course requirements. See pages 46–49 for more information³ The Master of Teaching is available only to students studying onshore in Australia

Course	CRICOS	Duration	Intake	Indicative first-year fee A\$ ¹	Indicative total fee A\$ ¹	Admission criteria ²
Engineering, mining and surveying						
GRADUATE DIPLOMA						
Metallurgy³ KAL	054623M	1 year	Feb, Jul	42,472	42,472	A bachelor degree in engineering or science, excluding metallurgical fields
Mining³ KAL	003967J	1 year	Feb, Jul	41,699	41,699	A bachelor degree in applied geology or in civil, geological or geotechnical engineering. Applicants with relevant work experience plus relevant qualifications will be considered on an individual basis
Professional Engineering <i>Majors:</i> Chemical Engineering Civil and Construction Engineering Electrical and Electronic Engineering Mechanical Engineering Mining Engineering Petroleum Engineering	098139D	1 year	Feb, Jul	44,569	44,569	A bachelor degree (or equivalent) in engineering or a related science field
MASTER DEGREE						
Engineering Management	109150C	1.5 years	Feb, Jul	42,522	63,783	A bachelor degree (or equivalent) in engineering or construction, and at least 1 year of relevant post-degree work experience
Professional Engineering <i>Majors:</i> Chemical Engineering Civil Engineering Embedded Systems Engineering Emerging Power Systems Mechanical Engineering Metallurgical Engineering ³ KAL Mining Engineering ³ KAL Petroleum Engineering Telecommunications and Network Engineering	0100657	2 years	Feb, Jul	44,569	89,137	A 4-year undergraduate qualification in the same field as your chosen major, or in a related field that is not Washington Accord-accredited. Applicants from unrelated engineering fields may be eligible for direct entry to these majors (assessed on an individual basis): Chemical Engineering, Civil Engineering, Mechanical Engineering, Metallurgical Engineering, Mining Engineering, Petroleum Engineering or Software Engineering
Health						
GRADUATE CERTIFICATE						
Public Health MAL	079914E	6 months	Feb, Jul	21,648	21,648	A bachelor degree, preferably in health, education, behavioural sciences, social sciences or management
GRADUATE DIPLOMA						
Health Administration	007874D	1 year	Feb, Jul	42,253	42,253	A bachelor degree in a health-related field
Public Health MAL	080069E	1 year	Feb, Jul	43,295	43,295	A bachelor degree preferably in health, education, behavioural sciences, social sciences or management
Sexology	068615G	1 year	Feb	43,295	43,295	A bachelor degree in a health-related field
MASTER DEGREE						
Advanced Practice SIN <i>Major: Clinical Leadership</i>	108520A	1 year	Feb	38,433	76,866	A bachelor degree in a related health science field with a minimum course-weighted average of 70%, and 3 years of postgraduate work experience in a related field
Clinical Exercise Physiology	097865D	1.5 years	Feb	45,610	68,416	A bachelor degree (or equivalent) in exercise and sports science with a course-weighted average of at least 60%. Your bachelor degree must meet the accreditation requirements of Exercise and Sport Science Australia (ESSA). If you have completed a non-ESSA-accredited degree in exercise science or a similar field, you need a Graduate Entry Assessment through ESSA
Clinical Physiotherapy <i>Streams:</i> Continence and Pelvic Health Musculoskeletal Sports Physiotherapy	049888F	1 year	Feb	47,463	47,463	A bachelor degree (or equivalent) in physiotherapy and at least 3 years' relevant clinical experience; plus registration as a physiotherapist with the Physiotherapy Board of Australia, or eligibility for limited registration for postgraduate training in Australia

All courses are offered at Curtin Perth unless otherwise specified. These abbreviations indicate the other Curtin campuses where you can complete the course:

COL Colombo **DUB** Dubai **KAL** Kalgoorlie **MAL** Malaysia **MAU** Mauritius **SIN** Singapore

The indicative fees and intake periods shown are for Curtin Perth. Please contact the relevant campus for fees and intake periods

Course	CRICOS	Duration	Intake	Indicative first-year fee A\$ ¹	Indicative total fee A\$ ¹	Admission criteria ²
Clinical Psychology	0100584	1 year	Feb	41,660	41,660	An Australian Psychology Accreditation Council-accredited professional competencies qualification, such as Curtin's Master of Psychology (Professional), or equivalent APAC level 3 qualification. Entry is competitive and shortlisted applicants will be interviewed
Dietetics	079872K	2 years	Feb	43,295	86,590	A bachelor degree that meets the Dietitians Association of Australia requirements for entry to a graduate-entry master (specifying that 50% of your first and second years of undergraduate study must include bioscience, chemistry, physiology and biochemistry), and have 100 credit points (or equivalent) of undergraduate study in nutrition at second- and third-year levels. Entry is competitive; a high course-weighted average is required and shortlisted applicants candidates will be interviewed
Health Administration	006110A	2 years	Feb, Jul	41,096	82,191	A bachelor degree (or equivalent) in a related field, or a bachelor degree (or equivalent) in an unrelated field and work experience in health administration
Midwifery	114106J	2 years	Jul	38,433	76,866	A bachelor degree (or equivalent) with a minimum course weighted average of 70% AND completion of a human biology unit at tertiary level. Entry to this course is subject to quota.
Nursing Practice	064467B	2 years	Jul	38,433	76,866	A bachelor degree (or equivalent) with a minimum course-weighted average of 70%, and completion of tertiary-level human biology and research units. Entry is subject to course quota
Occupational Therapy	077383K	2.5 years	Jan	50,009	116,689	A bachelor degree (or equivalent), preferably in a related field, with a course-weighted average of 65%; and evidence of studies in human biology or in other human biosciences. Entry is subject to course quota
Doctor of Physiotherapy (Extended Master)	0100217	3 years	Jan	53,395	142,388	A bachelor degree (or equivalent) with a minimum course-weighted average of 70%, and completion of 3 of these subjects at a bachelor degree level: human musculoskeletal anatomy, human biology/physiology, health research methods or evidence-based practice. Entry to this course is competitive, and, to assist in the evaluation of your application, you should submit as much information as possible about your education and professional background
Psychology (Professional)	084066J	1 year	Feb	39,714	39,714	A 4-year Bachelor of Psychology (or equivalent) completed within the past 10 years and approved by the Australian Psychology Accreditation Council. Entry is competitive and shortlisted applicants will be interviewed
Public Health MAL	064462G	2 years	Feb, Jul	43,295	86,590	A bachelor degree preferably in health, education, behavioural sciences, social sciences or management, with above-average grades
Public Health (Practice)	104514J	1.5 years	Feb, Jul	43,295	64,943	A bachelor degree preferably in health, education, behavioural sciences, social sciences or management, with above-average grades
Sexology (Professional)	107629G	1.5 years	Feb	43,295	64,943	A recognised bachelor degree in a related health profession such as medical, social work or welfare studies, education, health promotion, health sciences, psychology, sociology or biological sciences. Applicants may be interviewed
Social Work (Qualifying)	0100481	2 years	Jun	46,117	81,987	A recognised bachelor degree in health or social sciences with a course-weighted average of 65%. Entry is subject to course quota
Speech Pathology	033868G	2 years	Jan	46,626	88,071	A bachelor or honours degree with a minimum course-weighted average of 65%, and evidence of university-level studies in human biology. Entry is subject to course quota

¹See page 55 for information on tuition fees²This admission criteria is in addition to meeting Curtin's English language proficiency and any other course requirements. See pages 46–49 for more information³This course is not available at Curtin Perth

Course	CRICOS	Duration	Intake	Indicative first-year fee A\$ ¹	Indicative total fee A\$ ¹	Admission criteria ²
Information technology						
GRADUATE CERTIFICATE						
Computing	107665C	6 months	Feb, Jul	17,761	17,761	A bachelor degree that includes linear algebra
Predictive Analytics	092979A	6 months	Feb	18,985	18,985	A bachelor degree in science, engineering, business or commerce; and university-level study in mathematics, programming or logic systems
GRADUATE DIPLOMA						
Predictive Analytics	092978B	1 year	Feb, Jul	37,970	37,970	A bachelor degree in science, engineering, business or commerce; and university-level study in mathematics, programming or logic systems
Professional Engineering <i>Major: Software Engineering</i>	098139D	1 year	Feb, Jul	44,569	44,569	A bachelor degree (or equivalent) in engineering or related science field
MASTER DEGREE						
Artificial Intelligence	105742M	1 year	Feb, Jul	35,522	35,522	A 3-year bachelor degree in information technology, computational science or engineering, and at least 2 years of relevant work experience; or a 4-year bachelor degree in information technology, computational science or engineering
Commerce <i>Major: Information Systems and Technology</i>	078409G	2 years	Feb, Jul	36,404	72,808	A recognised bachelor degree (or equivalent) in any field
Computing <i>Majors: Artificial Intelligence Computer Science Cyber Security</i>	107621D	2 years	Feb, Jul	35,522	71,043	A bachelor degree in information technology, computer science or engineering; or a bachelor degree plus demonstrated knowledge and skills in programming, operating systems and computing mathematics
Cyber Security	105743K	1 year	Feb, Jul	35,522	35,522	A 3-year bachelor degree in information technology, computational science or engineering, with at least 2 years of relevant work experience; or a 4-year degree in information technology, computational science or engineering
Information Systems and Technology	049881B	1.5 years	Feb, Jul	34,671	52,006	A recognised bachelor degree (or equivalent) in a related field; or a Curtin Graduate Certificate in Information Systems and Technology; or a recognised bachelor degree (or equivalent) in any field and at least 5 years of relevant substantial work experience
Predictive Analytics <i>Majors: Data Science Finance and Investment Analytics Internet of Things Resource Operations Analytics</i>	092977C	2 years	Feb, Jul	37,970	75,940	A bachelor degree in science, engineering, business or commerce; and university-level study in mathematics, programming or logic systems
Professional Engineering <i>Majors: Software Engineering Telecommunications and Networking Engineering</i>	100657	2 years	Feb, Jul	44,569	89,137	A 4-year undergraduate qualification in the same field as your chosen major or in a related field that is not Washington Accord-accredited

All courses are offered at Curtin Perth unless otherwise specified. These abbreviations indicate the other Curtin campuses where you can complete the course:

COL Colombo **DUB** Dubai **KAL** Kalgoorlie **MAL** Malaysia **MAU** Mauritius **SIN** Singapore

The indicative fees and intake periods shown are for Curtin Perth. Please contact the relevant campus for fees and intake periods

Course	CRICOS	Duration	Intake	Indicative first-year fee A\$ ¹	Indicative total fee A\$ ¹	Admission criteria ²
Physical sciences, geoscience and mathematics						
GRADUATE CERTIFICATE						
Geospatial Intelligence	0100582	6 months	Feb, Jul	20,960	20,960	A bachelor degree in any field. Applicants with 3 years of work experience in GIS or remote sensing fields will be considered for entry
GRADUATE DIPLOMA						
Geospatial Intelligence	0100578	1 year	Feb, Jul	41,920	41,920	A bachelor degree in any field. University-level studies in mathematics or statistics is desirable
MASTER DEGREE						
Geoscience <i>Majors:</i> Exploration and Mining Geology Geophysics	108524H	2 years	Feb, Jul	40,898	81,795	A bachelor degree in science or related field. For Exploration and Mining Geology, you must have studied university-level foundational geoscience units
Geospatial Intelligence	0100574	2 years	Feb, Jul	41,920	83,840	A bachelor degree in any field. University-level studies in mathematics or statistics is desirable
Science (Actuarial and Financial Science)	054627G	1.5 years	Feb, Jul	35,595	53,393	A 4-year bachelor or honours degree in mathematics, statistics, science, engineering or finance. Mathematics and statistics competency must be equivalent to Curtin's advanced calculus, linear algebra and statistical methods units
Science (Industrial Engineering)	107627J	2 years	Feb, Jul	41,148	82,295	A bachelor degree in science or engineering, and second-year university-level competency in mathematics or a related field

¹See page 55 for information on tuition fees²This admission criteria is in addition to meeting Curtin's English language proficiency and any other course requirements. See pages 46–49 for more information

“I chose Curtin for my master degree because it offers a comprehensive curriculum with theory and practical experience. Other benefits include the expert faculty, great facilities, and hands-on experience through clinical placements.

One of the aspects I've enjoyed most about being a Curtin student is the vibrant campus life and the opportunity to participate in various extracurricular activities. Whether it's guild events, like the barefoot lunch, games nights and study skills sessions, or joining clubs related to my interests, there's always something exciting happening on campus.”

Nandani Khetia
Master of Dietetics

Your research degree choices

Curtin has research expertise, specialist facilities and industry collaborations that can empower your research to make a real difference.

Course	CRICOS	Duration	Indicative first year fee¹ A\$
MASTER OF RESEARCH			
Agriculture	0100022	2 years	38,800
Biomedical Sciences	0100023		41,600
Chemistry	0100024		38,800
Earth and Planetary Sciences	0100025		38,800
Economics and Finance	0100026		36,400
Environmental Science	0100027		38,000
Fine Arts	0100028		36,400
Marketing	0100029		38,000
Physics	0100030		38,800
Psychology	0102163		40,800
Public Health	0100585		36,000
MASTER OF PHILOSOPHY			
Accounting MAL	061492C	2 years	36,400
Agriculture and Food Science	114704J		
Business and Management	107671E		36,400
Chemical Engineering	061495M		38,000
Chemistry	061496K		38,000
Civil Engineering MAL	061497J		38,000
Computing	114112J		38,000
Corporate Sustainability	061499G		38,000
Design and Built Environment	107672D		36,000
Economics, Finance and Property MAL	061542J		36,400
Education	061531A		36,000
Electrical and Computer Engineering MAL	061500G		38,000
Environmental Science	072468A		38,000
Geographic Information Science	074579M		38,800
Geology MAL	061503E		38,000
Geophysics	061504D		38,000
Health Sciences	107675A		38,000
Health Studies	107686J		36,000
Humanities	061538E		36,000
Information Systems	061543G		36,400
Law	087732M		36,400
Marketing MAL	061545F		36,400
Mathematical Sciences	114121K		
Mechanical Engineering MAL	061509K		38,000
Media, Culture and Creative Arts MAL	061535G		36,000
Medical Radiation Science	098149B		38,000
Mining and Metallurgical Engineering	061514B		38,000
Petroleum Engineering	061517K		38,000
Physics	061518J		38,000
Public Policy	065873B		36,400
Surveying and Mapping	061522B		38,800

All courses are offered at Curtin Perth unless otherwise specified. These abbreviations indicate the other Curtin campuses where you can complete the course:

COL Colombo **DUB** Dubai **KAL** Kalgoorlie **MAL** Malaysia **MAU** Mauritius **SIN** Singapore

The indicative fees and intake periods shown are for Curtin Perth. Please contact the relevant campus for fees and intake periods

Course	CRICOS	Duration	Indicative first year fee¹ A\$
DOCTOR OF PHILOSOPHY			
Accounting	043967M	4 years	36,400
Agriculture and Food Science	114705H		
Applied Geology	043949B		38,000
Architecture and Interior Architecture	043932M		36,400
Biomedical Sciences	043971D		40,800
Business and Management MAL	107619J		36,400
Chemical Engineering	043951G		38,000
Chemistry	043968K		38,000
Civil Engineering	043952G		38,000
Computing	043987G		38,000
Construction Management	050585M		36,400
Design	043988F		36,400
Economics, Finance and Property	043989E		36,400
Education	043960G		36,400
Electrical and Computer Engineering	043990A		38,000
Engineering MAL	050587J		38,000
Environmental Science	072469M		38,000
Exercise, Sport and Rehabilitation	097862G		40,800
Exploration Geophysics	043954E		38,000
Health Sciences	043958A		36,400
Human Communication Science	043962E		36,400
Humanities	043959M		36,400
Information Systems	043991M		36,400
Law	092772E		36,400
Marketing	043994G		36,400
Mathematical Sciences	043955D		38,000
Mechanical Engineering	043956C		38,000
Media, Culture and Creative Arts	043995G		36,400
Medical Radiation Science	043957B		38,000
Medicine	0100978		41,600
Mining and Metallurgical Engineering	044005J		38,000
National Drug Research Institute	043964C		36,800
Nursing and Midwifery	043996F		36,400
Occupational Therapy	043997E		40,800
Petroleum Engineering	006095F		38,000
Pharmacy	043998D		40,800
Physics	043950J		38,000
Physiotherapy	043999C		40,800
Psychology	043965B		40,800
Public Health	044001B		36,400
Public Policy	065874A		36,400
Social Sciences	048085E		36,400
Social Work and Social Policy	044003M		36,400
Spatial Sciences	006092J		38,000
Urban and Regional Planning	050586K		36,400
DOCTORAL DEGREES			
Business Administration	023971C	3 years	36,500
Education	023972B		33,500
Sustainable Development	085112M		36,000

¹See page 55 for information on fees

A global research experience

Dr Tin Do completed his degree in structural engineering (with first-class honours) at Vietnam National University – University of Technology. He chose to complete his PhD at Curtin’s Centre for Infrastructural Monitoring and Protection, with grants from Curtin and the Australian Research Council.

Tin’s thesis received a national award and he was subsequently awarded a prestigious program by Australia’s Department of Home Affairs. To date, he has contributed more than 30 publications in his field of impact and blast engineering.

We asked him about his Curtin research experience.

Tin, why did you choose Curtin for your doctoral study?

Curtin is ranked in the top 1% of universities in the world and has a good academic reputation. It has top-ranking professors in my field working there, and state-of-the-art testing equipment.

Why did you choose this research area?

The collapse of structures under bombing attacks and vehicle collisions are happening more frequently, and we need to better understand the behaviours of structures under those loads to find efficient solutions. I wanted my PhD research to contribute to design solutions for structures that are potentially subject to impact and blast events, to reduce the hazards and save lives.

What did you enjoy most about being a research student at Curtin?

Other than contributing to greater understanding of my field, I enjoyed the teamwork. I worked with bachelor and master students for their final-year projects – they supported me with the experimental tests in the lab, and I assisted them to finalise results and build their writing skills. I also encouraged them to develop their careers to be structural engineers, and we still keep in touch.

How well did your supervisors support you?

They [John Curtin Distinguished Professor Hong Hao and Dr Thong Pham] supported me in so many different ways ... not only in academic life but also in day-to-day life. When I first arrived, they prepared everything so quickly. I had my own quiet office to do my research. And even after graduating they have helped me to find a new position and with applications for research projects.

What did you enjoy most about the campus?

I enjoyed the feeling of studying in the library with my friends and so many students around. The TL Robertson Library is equipped with advanced computers and has all the resources that students need. Walking around after lunch to enjoy the many spectacular views, and having the coffee on swinging hammocks near the library. Also, I played soccer at South Oval with my mates every Saturday afternoon!

What about Perth – did you enjoy living here?

Perth is one of the most beautiful and peaceful places in the world. It’s cheaper than crowded cities like Melbourne and Sydney, and public transport fees are very low. And the people are so friendly.

Finally, what was the highlight of your time at Curtin?

The unforgettable moment was when I received the assessors’ comments for my thesis. There were many good comments, but the most important one was that “The thesis has advanced the current state of knowledge”. That comment showed the success of my PhD course, and it has encouraged me a lot for my current and future work.




Van Tin Do

HAVING FULFILLED ALL THE RESEARCH AND EXAMINATION
REQUIREMENTS IS DULY ADMITTED TO THE DEGREE OF

DOCTOR OF PHILOSOPHY

AND TO ALL THE PRIVILEGES ATTACHED TO THE SAME.
THE GRADUATION SEAL OF CURTIN UNIVERSITY
WAS HERETO AFFIXED PURSUANT TO A RESOLUTION
OF THE COUNCIL.

  
Chancellor Vice-Chancellor

 Curtin University





Check the admission criteria

To study a Curtin course, you must meet the course's academic criteria and English language proficiency requirements.

Undergraduate admission criteria

To apply for admission to a Curtin undergraduate course, you must have:

- a recognised education qualification from your home country (see pages 48–49)
- English language proficiency
- met the course prerequisites.¹

Postgraduate admission criteria

To apply for admission to a Curtin postgraduate course, you must have:

- a recognised university degree
- English language proficiency
- met the course prerequisites.¹

Research admission criteria

To be eligible for entry to our research courses, you must have:

- a minimum of four years of previous study in a tertiary institution
- met the eligibility criteria of the Graduate Studies Committee for the proposed enrolling area/s
- English language proficiency
- confirmation from the head of your enrolling area that the necessary supervision and facilities can be provided to support your research.

To find a research supervisor, visit curtin.edu/hdr-supervisors.

English language proficiency

For entry to all Curtin courses, you must demonstrate English language proficiency. See the table on page 46 for the recognised tests and qualifications you can use to demonstrate your English proficiency. Some courses require a different level of English language proficiency – see the table on page 47.

If you don't meet the English language requirements, you may be eligible to enrol in a program with Curtin English. Completing a program will help you meet the English levels you need to study at Curtin. See page 50 for more information.

¹ Entry is competitive and some courses may require higher than minimum levels

Not sure you meet Curtin's admission criteria?

We offer two pathways that can help you meet the criteria needed to study at Curtin. See page 50 for more information.



General English language proficiency requirements

English language test	Score
IELTS (International English Language Testing System) Academic Listening, Reading, Writing, and Speaking Overall band score	6.0 6.5
GCSE/GCE O-level English/English Language/English Literature/General Paper/ESL	Grade C
GCE Advanced Subsidiary Level English/English Language/English Literature/General Paper/ESL	Grade C
GCE A-level English/English Language/English Literature/General Paper/ESL	Grade E
SPM 1119 English	Grade A and CEFR B2
TOEFL (Test Of English As A Foreign Language) iBT Reading Listening Speaking Writing	79 (overall) 13 13 18 21
Pearson Test of English – Academic (PTE-A) Listening, Reading, Writing, and Speaking Overall band score	59 69
Occupational English Test (OET)	300 overall and 250 in listening, reading, writing and speaking.
WACE Stage 2 or 3 English, Literature or English as an Additional Language or Dialect (EALD)	Scaled score of 50
Western Australian Universities' Foundation Program (WAUFP), English Language and Australian Cultural Studies (ELACS)	50%
South Australian Certificate of Education (SACE) in the subject of English as a Second Language	Score 10 – band A, B or C
Hong Kong Certificate of Education Examination (HKCEE) English OR Hong Kong Diploma of Secondary Education (HKDSE) English as a core subject	Grade of 4
C1 Advanced (Formerly known as Cambridge English: Advanced (CAE)) Listening, Reading, Writing, and Speaking Overall score	169 176
Completion of Curtin's English Language Bridging (ELB) course	Grade B
Completion of one semester of full-time study of a bachelor degree course at a university in Australia, New Zealand, United Kingdom and Ireland	
Completion of the full first year of a bachelor degree at a recognised university in Canada, Singapore, South Africa or the US	
Completion of any Australian university English language proficiency program of one semester (six months) full-time in duration or more, that satisfies course entry requirements at those universities	



Courses with other English language proficiency requirements¹

Course	IELTS (International English Language Testing System) Academic			PTE (Pearson Test of English) – Academic
	Writing and speaking	Reading and listening	Overall band score	
UNDERGRADUATE DEGREE COURSES				
Bachelor of Business Administration Bachelor of Commerce Computing, data science, engineering, geoscience and life sciences courses offered by the Faculty of Science and Engineering, except Bachelor of Advanced Science (Honours) courses (see the entry below)	6.0	6.0	6.0	59
Bachelor of Advanced Science (Honours) Bachelor of Science: Medical Radiation Science, Midwifery, Nursing, Occupational Therapy, Oral Health Therapy, Paramedicine, Pharmacy, Physiotherapy, Social Work, Speech Pathology	7.0	7.0	7.0	76
Bachelor of Education: Early Childhood Education, Primary Education, Secondary Education	Writing: 7.0 Speaking: 8.0	Reading: 7.0 Listening: 8.0	7.5	80
Bachelor of Medicine, Bachelor of Surgery	7.0	7.0	7.0	76
Bachelor of Science: Exercise and Sports Science	6.5	6.5	7.0	76
POSTGRADUATE COURSES				
Computing, data science, engineering, geoscience and life sciences courses that are offered by the Faculty of Science and Engineering	6.0	6.0	6.0	59
Journalism courses	7.0	6.5	7.0	76
Dietetics, midwifery, nursing, occupational therapy, pharmacy, physiotherapy, psychology, social work and speech pathology courses	7.0	7.0	7.0	76
Professional Writing and Publishing courses	Writing: 7.0 Speaking: 6.0	Reading: 7.0 Listening: 6.0	6.5	69
Master of Teaching	Writing: 7.0 Speaking: 8.0	Reading: 7.0 Listening: 8.0	7.5	80

¹ To see the full list of English language proficiency tests, visit curtin.edu/accepted-english-tests



Using your home country qualifications to apply

You apply to study a Curtin undergraduate course using an education qualification that is recognised by Curtin. Here are our minimum academic requirements, country-by-country.

Country	Qualification and minimum entry requirements
Australia	Completion of Australian Year 12 (VCE, HSC, QCE, WACE, SACE, TCE, NTCE, ACT) with a minimum Australian Tertiary Admission Rank (ATAR) of 70; and a scaled mark of at least 50 in English, Literature, or English as an Additional Language or Dialect
Bangladesh	Completion of the Bangladesh Higher Secondary Certificate (HSC) with a minimum Grade Point average of 4.0 (70–79%), and separate evidence of English competence
Botswana	Requirements as listed under United Kingdom or completion of part one (the first two years) of a degree at University of Botswana. English competence will be assessed
Brazil	Completion of the first year of a four-year bachelor/ bacharelado or licenciatura/licenciado (degree) or título profissional (professional title) from a recognised institution; and English competence
Brunei	Three O-level passes (minimum grade C) and two A-level passes (minimum five points) in the Brunei Cambridge General Certificate of Education (GCE); and English competence.
Canada	Completion of a provincial high school diploma with an average of at least 60 in Grade 12, and including a grade of 60 or better in Year 12 English (except Quebec where separate evidence of English is required)
China	Completion of the National College Entrance Examination (NCEE or Gao Kao) with an aggregate of the required individual subjects that is equivalent to 67% of the overall maximum score, or one year of a bachelor degree at a recognised university; and English competence
Germany	Completion of the Abitur/Zugnis der Allgemeinen Hochschulreife or Reifezeugnis (secondary school leaving certificate) at Gymnasium with an average grade of 4 including English or separate English competence; or completion of the Fachgebundene Hochschulreife with separate evidence of English competence
Hong Kong	Completion of the Hong Kong Diploma of Secondary Education (HKDSE) with a point score of 15 from the best five subjects, with at least a grade of 4 in English language or separate evidence of English competence
India	Completion of the All India Senior School Certificate awarded by the Central Board of Secondary Education (CBSE) or Indian School Certificate (ISC) awarded by Council with a grade average of 60% in the best four subjects, and 60% in English or separate evidence of English; or completion of Higher Secondary School Certificate awarded by one of the recognised Higher Secondary Education Boards with a grade average of 65%, with separate evidence of English. Grade average requirement may vary by course
Indonesia	Completion of Ijazah Sekolah Menengah Atas (SMA) (Certificate of Completion from Academic Senior Secondary School) with an overall average grade of at least 77%, and separate evidence of English competence
Iran	Completion of the first year of a four-year bachelor degree at a recognised institution, or completion of a two-year associate degree or higher diploma (after completion of National High School Diploma) from a recognised institution; and English competence

Country	Qualification and minimum entry requirements
Japan	Completion of first year of a Gakushi (bachelor degree) at a recognised institution, or Certificate of Graduation awarded by a recognised technical/vocational college; and English competence
Kenya	Completion of the first year of a bachelor degree at a recognised institution, and English competence
Korea	Completion of High School Diploma with a score of 300 (75%) in the National University Entrance Examination (College Scholastic Ability Test) (CSAT), or completion of one year of a four-year bachelor degree at a recognised university; and separate evidence of English competence
Malaysia	Three credit passes at SPM level and two passes in STPM (minimum 5 points), or completion of the Malaysian Independent Chinese Secondary Schools Unified Examination Certificate (UEC) (Senior Middle Level) with 15 points aggregated from the best five academic subjects; and English competence
Mauritius	Three O-level passes (minimum grade C) and two A-level passes (minimum five points) in the Cambridge Higher School Certificate and grade C in O-level English or English literature; or full International Baccalaureate with a minimum total of 24 points from six subjects at one sitting. Three of the subjects must be at the higher level and one of the six subjects should be English
Myanmar	Completion of one year of a four-year bachelor degree or two years of a three-year bachelor degree at a recognised institution; and separate evidence of English competence
Nepal	Completion of School Leaving Certificate Examination (Grade XII) awarded by the National Examination Board with at least Cumulative Grade Point Average (CGPA) of 3.0; and separate evidence of English competence
Norway	Completion of the Vitnemål For Videregående Opplæring (Leaving Certificate from Upper Secondary School) with an average grade of 3 plus a grade of 4 or better in English.
Oman	Completion of one year of a bachelor degree at Sultan Qaboos University, or completion of a recognised diploma at a public institution; plus English competence
Pakistan	Completion of the Pakistan Higher Secondary Certificate/ Intermediate Certificate with at least an average of 75% of the total marks (825 out of 1100); and separate English competence. Note that this qualification does not satisfy course subject prerequisites
Philippines	Completion of Philippines High School Diploma (Grade 12) (Academic track) with a final result of 80%, and a total score of at least 1000 out of 1600 in the SAT from the same sitting, with a minimum score of 400 in Evidence-Based Reading and Writing, and Math Section; and separate evidence of English competence
Russia	Completion of one year of a Diplom ob okonchaniy vysshego uchebnogo zavedeniya (Diploma of Specialist) at a state institution or fully accredited private institution where separate evidence of English competence is required
Saudi Arabia	Completion of the first year of a four-year bachelor degree at a recognised institution, or completion of a two-year diploma or associate degree at a public university; and English competence

Country	Qualification and minimum entry requirements
Singapore	Three GCE O-level passes (minimum grade C) or completion of the Integrated Program; and two H2 level passes in the Singapore/Cambridge GCE A Level (minimum 5 points); and Grade C in O-level English or English Literature, or separate evidence of English competence
South Africa	Completion of the National Senior Certificate with a grade average of Level 4 over six subjects (excluding Life Orientation), including a grade of Level 4 in the English Home Language
Spain	Completion of the two-year Titulo de Bachiller with a minimum final grade average of 7, and separate evidence of English competence
Sri Lanka	Three O-level passes (minimum grade C) and three A-level passes (minimum 5 points) in the Sri Lankan General Certificate of Education (GCE) (excluding General Paper); and Grade C in General English, or separate evidence of English competence
Taiwan	Completion of the first year of a four-year bachelor degree at a recognised institution, and English competence
Tanzania	Three passes (minimum grade C) in the Certificate of Secondary Education (CSE) examinations of the National Examinations Council of Tanzania (NECTA); and two principal level passes in the Advanced Certificate of Secondary Education (ACSE) (minimum of one C and one D grade); and Grade C or better in CSE English, or separate evidence of English competence
Thailand	Completion of one year of a bachelor degree at a recognised institution, and English competence
United Arab Emirates	Completion of the first year of a degree at United Arab Emirates University, and English competence, or completion of a diploma or higher diploma at a recognised institution; and English competence
United Kingdom	Three GCE O-level/GCSE passes and two GCE A-level passes (minimum 5 points), with Grade C or better in GCE O-level/GCSE English, English Literature or English Language or separate evidence of English competence
United States	A US High School or a High School Diploma based on a US curriculum with an average grade of B or better in 12th grade and a total score of at least 1000 out of 1600 in the Evidence-based Reading and Writing and Math in the SAT from the same sitting, with a minimum of 400 in each component; or a composite score of 21 or better in the American College Test (ACT); or completion of the first year of a four-year bachelor degree at a regionally accredited institution
Vietnam	Completion of the Bang Tu tai or Bang Tot nghiep Pho thong Trung hoc (Vietnamese Upper Secondary School Graduation Diploma) with at least 7.5 in the score for graduation evaluation, supplementary SAT and ACT score can be considered to meet higher entry requirement, or 7.5 in Grade 12 school report from an approved gifted high school and separate evidence of English competence
Zambia	Refer to United Kingdom; OR completion of the first year of a degree at University of Zambia or The Copperbelt University, and English competence
Zimbabwe	Requirements as listed under United Kingdom, or completion of five Zimbabwe General Certificate of Education O-level passes and two A-level passes (minimum 5 points), or completion of the first year of a degree at University College of Rhodesia and Nyasaland, University of Rhodesia or University of Zimbabwe; and English competence

Undergraduate course cut-off scores key

The below information relates to the indicative cut-off scores for undergraduate courses listed on pages 21–31. Note that scores for individual prerequisites may be also be used for assessment purposes.

ATAR: Australian Tertiary Admission Rank – applicable to all Australian matriculation

GCE: General Certificate of Education

Score conversion for GCE A-level:

A grade = 5 points

B grade = 4 points

C grade = 3 points

D grade = 2 points

E grade = 1 point

HKDSE: Hong Kong Diploma of Secondary Education

IB: International Baccalaureate

India CBSE: India Senior School Certificate awarded by the Central Board of Secondary Education (CBSE)

India HSC: Higher Secondary School Certificate (Standard Year 12 Qualification) awarded by one of the recognised Higher Secondary Education Boards in India

Ontario Gr 12: Ontario Grade 12

Sri Lanka: GCE A-level issued by the Department of Examinations

Score conversion for Sri Lankan GCE A-Level:

A grade = 5 points

B grade = 4 points

C grade = 3 points

S grade = 1 point

STPM: Sijil Tinggi Persekolahan Malaysia

Subject grades conversion for STPM:

A = 5 points

A- or B+ = 4 points

B = 3 points

B- or C+ = 2 points

C = 1 point

WAUFP: Western Australian Universities' Foundation Program



Our entry pathways

If you want to study a Curtin course but you don't meet the admission criteria, we offer two pathways for entry: Curtin College and Curtin English.

Depending on the requirements of the course you want to study, and your current education level, our Curtin College and Curtin English pathways can prepare you for direct entry to Curtin.

Curtin English

If you don't meet the English language proficiency required for your chosen course, Curtin English can help you achieve the level you need for entry to Curtin University or Curtin College.

Curtin English courses can be packaged together with your chosen undergraduate, postgraduate or diploma program to streamline your enrolment and visa application process.¹

At Curtin English, you will not only improve your English, but also develop the academic literacy skills that will prepare you to succeed in your future Curtin course.

Curtin English programs

Curtin English has three main programs: General English, Gateway English and English Language Bridging. Your current English language test result and the level you need for admission to your chosen Curtin course will determine the English program suitable for you.

Curtin English will use your results from an approved language test to plan your pathway. Approved tests include:

- Duolingo
- LanguageCert
- Linguaskill
- International English Language Testing System (IELTS)
- Pearson Test of English – Academic (PTE)
- Test of English as a Foreign Language (TOEFL).

Use the English Pathway Planner tool on the Curtin English website to find out which Curtin English program is right for you.

If you don't have a recent English language test result, you will complete the Password test. This is a free online language test that will determine your English starting level. Your score can be used for entry into all Curtin English courses.

For more information, visit curtin.edu/int-pathways.

¹ Note that packaged offers are available only to applicants with IELTS 5.0 or higher

² Due to recent visa regulation changes, Australia's Department of Home Affairs may require a recognised test, which currently include IELTS, PTE, TOEFL, CAE and OET tests

Curtin English scholarship¹

If you have been offered an English package with your Curtin course admission offer (conditional), you will be eligible to receive up to A\$7,008 towards your English tuition – which may cover the full cost of your English course.

This scholarship is available to international students who are studying Gateway and/or ELB as a pathway to Curtin University.

You do not need to apply for the scholarship, as we will advise if you are eligible when you receive your conditional offer. If you are eligible, you will only need to accept your conditional offer and commence the Curtin English course outlined in the offer to be admitted to the scholarship program.

¹ Note that scholarship details are subject to change

Curtin College

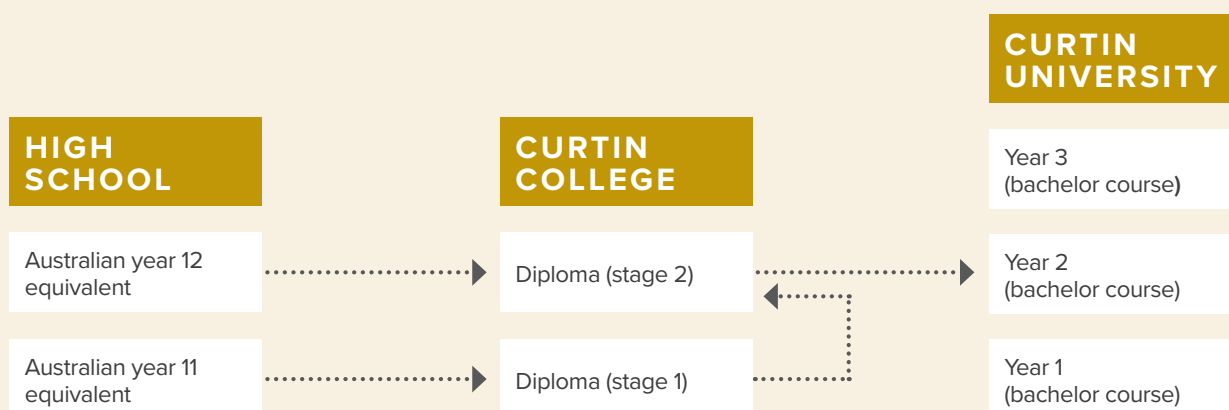
Curtin College is ideal if you have completed the equivalent of Australia's year 11 or year 12 in your home country and gained a high school graduate certification but you don't meet the criteria for direct entry to your chosen Curtin course.

Curtin College offers diploma courses that are equivalent to year one of a Curtin University bachelor degree. You will study units that lead to a Stage 2 Diploma qualification, enabling you to gain direct entry into year two of your chosen Curtin course (see the diagram below).

Curtin College is based at Curtin Perth, so you will enjoy access to the same services and facilities as Curtin students, making your transition to university a comfortable one.

For more information, visit curtincollege.edu.au.

The Curtin College pathway





“ Because I applied to study nursing, the requirement for English is quite high. Curtin English is a transition stage for me. I improved English listening, reading, writing and speaking after ELB classes, especially writing.

Academic writing is always going to be the most difficult part – we write a lot in university – the skills I learnt in ELB helps me with my assignments.

The most enjoyable memory in ELB class would be the experience of cultural exchange. We come from different countries, we help and support each other and share life experience. ”

Hongyang Shi
Master of Nursing Practice

How to apply

The easiest way to apply to Curtin is through an agent, but you may also be able to apply to us directly through our online application process.

Applying to Curtin is straightforward when you are applying as an international student.

1. Select your course

Visit curtin.edu/study to find the course you want to study.

2. Check the course admission criteria

General

Cut-off scores for most countries are shown against each course.

Prerequisites

Check your country's equivalent pass mark in the prerequisite subjects.

English language proficiency

Check your country's equivalent scores at curtin.edu/english-criteria.

You can meet English proficiency through other recognised tests. Find out more at curtin.edu/english-requirements.

Other criteria

Some courses will list supplementary information you need to submit with your application, such as a curriculum vitae (CV), a personal statement or professional references.

If you are interested in undertaking a Higher Degree by Research course, you must submit an Expression of Interest and receive an invitation from your potential supervisor before submitting an application. Find out more at curtin.edu.au/applying/research.

3. Submit your application

Apply through an agent

To find an agent who will manage your application efficiently, visit curtin.edu/agents.

Apply directly to Curtin

To apply directly, go to the course page of your chosen course, click APPLY NOW and follow the prompts.

If your application is successful, you will receive an offer package that explains how to accept your offer and how to enrol. When your enrolment is completed, you'll receive your Confirmation of Enrolment.





Applying to Curtin if you have a disability

If you have a disability or health condition, there are support services and resources to help you succeed in your studies.

Finding a suitable course

The Australian Disability Clearinghouse on Education and Training has assistance for exploring your course options, from NDIS plans and financial considerations, to choosing a course. Remember to check for inherent course requirements before you apply. To find out more, visit curtin.edu/inherent-requirements.

Accessing Curtin's disability services

Once you have chosen your course, make an appointment with us to discuss your requirements. We will help you create a Curtin Access Plan, which is a document that outlines the adjustments you need to study the course. You can also apply to bring your support worker onto campus.

Other disability supports include provisions for assistive technologies, tailored library services and a mentoring program for students with an autism spectrum or related condition. To find out more, visit curtin.edu/access-ability.

Coming to campus

Curtin offers wheelchair-accessible routes, courtesy bays and ACROD parking. Subject to availability, we also provide mobility scooters and manual wheelchairs for short-term loan. To find out more, visit curtin.edu/access-and-parking.

We're here to help

If you have any questions about admission, our team can help you.

Tel: 1300 222 888

FAQs: future.connect.curtin.edu.au

Web: curtin.edu.au/study

Getting ready to go

We want your transition to study in Australia to be as smooth as possible. To prepare for your move to Perth, use our pre-departure resources, at [curtin.edu/pre-departure](https://curtin.edu.au/pre-departure).



Your student visa

Apply for your student visa after you receive your Confirmation of Enrolment.

If you will be under the age of 18 when you start your Curtin course, you must nominate a guardian.

Find out more about applying for a student visa by visiting the Department of Home Affairs website at immi.homeaffairs.gov.au and searching "student visa".

We're here to help

If you have any questions about admission, our team can help you.

Tel: +61 8 9266 5888

Email: study@curtin.edu.au

FAQ: curtin.edu.au/study/help-support

Web: [curtin.edu/international](https://curtin.edu.au/international)



Managing your finances as a student

Before you start your course, check the fees you will need to pay and then plan your budget.

Tuition fees

Tuition fees are payable for each unit you study. The fee amount will depend on the course and units you study. Fees are calculated per semester (two study periods per year) or trimester (three study periods per year).

The course tables on pages 20–41 include the estimated fees for the first year of each course and the total fees for the course, based on the standard full-time study load.

Most Curtin courses are structured into semesters and have a full-time study load of 200 credits per year. However, and some courses are structured into trimesters, and some semester-based courses have a standard study load of 75 credits per semester. These variations may mean that the fees for your first year of study may vary slightly to the cost of completing the standard 200 credits per year.

All fees are subject to annual increases of no more than 5%. To see the student fee contribution for each unit and to find out more about fees, visit curtin.edu/course-fees.

Incidental fees

Some courses require additional payments for retainable materials and course-related costs. These are known as essential incidental fees, and will be advised in your Letter of Offer. Some course units may also have optional fees for course materials and other course-related items.

International Student Refund Agreement

When you receive your letter of offer, you will also receive a copy of our International Student Refund Agreement. The refund agreements lists the categories under which we will assess an application for refund. For more information about refunds, visit curtin.edu/fees-refunds.

Other expenses

Tuition fees do not cover the cost of some items required for studying a particular unit or course. Examples of these items include (but are not limited) to:

- art supplies
- field trips
- first aid courses
- lab coats
- textbooks
- Working With Children Check.

You may also incur day-to-day study-related expenses, such as transport and parking costs.

Curtin Student Guild

The Curtin Student Guild provides comprehensive education, welfare and social services to members. If you register as a full Guild member, you can gain taxation and budgeting advice, and benefit from a range of on-campus and off-campus discounts. For example, the Guild and the Curtin Bookshop offer bookshop grants to students in financial hardship. To find out more, visit guild.curtin.edu.au/advice/financial.



Getting to and from Curtin

Curtin Perth is just six kilometres from the city centre. There are several easy, safe, affordable and environmentally friendly ways to get to and around campus.



Parking

Download the smartphone parking app CelloPark, from the App Store or Google Play, to conveniently pay for the time you park on campus.

Transperth buses

More than 500 public buses stop at Curtin each weekday during semester. Curtin has two main bus terminals: Curtin Bus Station and the Curtin Central Bus Station, on the eastern and north-western sides of campus, respectively.

Routes 100 and 101 are high-frequency bus routes that link Curtin Perth with the Canning Bridge train station. Routes 998 and 999 link Curtin with Oats Street train station.

The CircleRoute buses, which travel between Perth's universities, train stations and shopping centres, leave every 15 minutes between 6.30am and 8pm.

Full-time students are eligible for Transperth travel concessions.

Curtin shuttle buses

Curtin provides a free hail-and-ride bus service for students who live in the suburbs of Waterford, Bentley, Victoria Park and South Perth. The Curtin Access Bus Service (CABS) operates on weekdays during semester. Download the CABS smartphone app for live GPS tracking, route mapping and timetables.



Trains

Mandurah line

Most Perth–Mandurah trains stop at the Canning Bridge train station, where you can then catch a connecting Transperth bus to Curtin. Buses run every seven or eight minutes during peak times.

Armadale line

Most Perth–Armadale trains stop at Oats Street train station, where you can catch a connecting Transperth bus to Curtin.

Cycling

Around campus, you will find many bicycle racks, several secure bike pods, and some bicycle enclosures with shower facilities that have secure swipe-card access.

Find your way with our online maps

Online, mobile-friendly maps of Curtin Perth and Curtin Kalgoorlie will ensure you'll never get lost at uni.

▶ ▶ ▶ Visit curtin.edu/maps.



Glossary

Course types

Bachelor degree

The standard university award recognised worldwide for completing an undergraduate course.

- **Double degree:** Studying two complementary bachelor degrees concurrently. For example, Bachelor of Laws and Bachelor of Arts.
- **Honours:** Additional research and coursework at an advanced level.

Postgraduate degree

A higher degree qualification and subject specialisation that can be studied once you have completed a bachelor degree.

Undergraduate study

Education that leads to your first qualification from a university, usually a bachelor degree.

Course structure

Clinical placement

Working as part of a team in a clinical setting, under supervision.

Fieldwork

An umbrella term for any approved practical work, teaching, study, volunteer or research activity, outside the normal place of university business. Fieldwork encompasses clinical placements, work placements, practicums, study tours and field trips.

Major

A series of more than eight units in the same area within a bachelor degree. A major includes at least two units at final-year level.

- **Double major:** Studying two majors within a degree course. For example, Bachelor of Commerce (Economics and Finance).

Professional placement / internship

Working in a professional environment to extend your knowledge and practical skills.

Specialisation / minor

Specialisations and minors are a series of four units in the same discipline. A specialisation or minor may complement your major or be from a different discipline. For example, you may study a Bachelor of Commerce (Marketing) and complement this with a humanities specialisation such as Korean Studies.

Stream

A series of six units in the same discipline.

Unit

A component of a course that covers one subject area in detail.

A unit may comprise lectures, tutorials, class presentations, group work, computer lab sessions, case studies, workplace assignments and exams.

- **Core unit:** A compulsory unit, as specified in the course outline.
- **Elective unit:** A unit that can be chosen from any discipline as long as you meet the prerequisites.
- **Optional unit:** A unit that you choose from a specified list provided in the course outline.

Course essentials

ATAR

The Australian Tertiary Admission Rank, used for allocating places in university courses.

- **Guaranteed ATAR:** A rank that guarantees you entry to the course (provided you meet the course prerequisites and English language requirements).
- **Minimum ATAR:** The minimum rank you need to be considered for entry to a course.

Accreditation

The formal recognition of a course by an accrediting body.

Professional recognition

A formal acknowledgement of your professional status, which may be required to practise in your field, and eligibility to access services that support professionals in that field.

Duration

The time it will take to complete the course if you study full-time.

Intake

The semester or trimester when you can begin studying the course.

Location

Curtin campuses that offer the course.

Portfolio entry

A pathway into Curtin's courses if you're taking General subjects at high school, or are studying a combination of ATAR, General and/or VET certificates. It is also suitable if you've finished school without an ATAR.

Prerequisite

A subject or unit you must complete before starting a course or taking a higher-level unit.

STAT

The Special Tertiary Admissions Test (STAT) is a national test for those who don't meet university admission criteria. STAT can be used to meet entry criteria for some courses, or as a way to satisfy Curtin's English proficiency requirements if you haven't done so through year 12.

For more information, visit tisc.edu.au/static/guide/stat.tisc.

Study mode

How much study you undertake in a semester or a trimester.

- **Domestic students:** Full-time study is three or four units per semester. Part-time study is one or two units per semester. Studying part-time reduces your weekly workload but extends the duration of your course.
- **International students:** International students studying in Australia on a student visa must study four units per semester for most courses. A small number of courses allow a study load of three units.

Other university terms

Advanced standing / credit for recognised learning

Recognition of any previous study or work experience you have that may exempt you from having to study some units of your degree.

Faculty

A teaching area comprising university schools and disciplines.

OUA

Open Universities Australia.

Semester

A 16-week study period. There are two semesters per calendar year.

TISC

The Tertiary Institutions Service Centre processes university applications on behalf of Western Australia's public universities. It also administers STAT.

Trimester

A 14-week study period. There are three trimesters per calendar year.

WACE

Western Australian Certificate of Education.



For more information

Curtin University

Kent St, Bentley
Western Australia 6102

Postal address

GPO Box U1987
Perth Western Australia 6845

Tel: 1300 222 888

Web: curtin.edu/international



StudyPerth is a consortium of universities, colleges and schools in Perth that promotes Western Australia's internationally recognised education sector and provides education services to the international community. Visit studypertth.com.au.



The Australian Technology Network of Universities (ATN) brings together five of the most innovative and enterprising universities in Australia. The ATN is recognised as a global leader of a new generation of universities focused on industry collaboration, research with real-world impact, and producing work-ready graduates to become global thinkers in business and the community.

Join the conversation!



facebook.com/curtinuniversity



[@curtinuniversity](https://tiktok.com/@curtinuniversity)



[@CurtinUni](https://twitter.com/CurtinUni)



科廷大学CurtinUniversity



[@curtinuniversity](https://instagram.com/curtinuniversity)



科廷大学CurtinUniversity



youtube.com/curtinuniversity



Connect with
Curtin University
through Wechat

This publication is available in alternative formats on request.

Disclaimer and copyright

This publication is correct as at May 2024 but is subject to change. In relation to courses, Curtin University may change the content, delivery, assessment methods and tuition fees; withdraw courses or limit enrolments; and vary other arrangements, including the academic area where courses are offered. For current information relevant to this publication, visit international.curtin.edu.au.

International students studying in Australia on a student visa must study full-time and meet other entry requirements, and are subject to international student fees.

This publication contains general information only. Readers should consider how it applies to their personal circumstances and seek specific advice. Subject to applicable law, Curtin University is not liable for anything done or not done in reliance on this publication.

© Curtin University 2024

CRICOS Provider Code 00301J

5819INT

curtin.edu.au